



ASSEMBLY MACHINES

ASSEMBLY MACHINES

INTRODUCTION

Manuli assembling machines are part of our integrated product range and are designed according to high quality standards and optimised through Manuli's extensive experience in the hydraulic market.

Manuli assembling machines are recommended for a high-performance, safe hose assembling procedure.

All Manuli assembling machines are tested and approved in both laboratory and field validation exercises.

The following index offers a guideline to aid selection of the proper machine with reference to the applications and performance requested.

Special machines (not included in this catalogue) are available upon request, as well as original spare parts.

Manuli hose and fittings products must be assembled in strict accordance with Manuli instructions and limitations.

Don't mix and match: use always Manuli original couplings and hoses.

Manuli hose, couplings and assembling machines are tested as an effective and reliable system. The use of different products and machines may cause premature hose failures, property damage, serious injury or death.

MANULI MAKES NO WARRANTIES, EXPRESS OR IMPLIED, AND ASSUMES NO RESPONSIBILITY OR LIABILITY FOR ANY LOSS OR DAMAGE, WHETHER DIRECT, INDIRECT, CONSEQUENTIAL OR INCIDENTAL WHICH MIGHT ARISE OUT OF CRIMPED HOSE ASSEMBLIES NOT PRODUCED FROM GENUINE MANULI HOSE FITTINGS, HOSE AND EQUIPMENT, IN CONFORMANCE WITH MANULI PROCESS SPECIFICATIONS FOR EACH SPECIFIC HOSE ASSEMBLY.

The latest edition of the Manuli crimping booklet is the only official guide to selecting proper hose and fittings combinations and for determining crimping compatibility and parameters.

ASSEMBLY MACHINES INDEX

| | MODEL | MACHINE TYPE | APPLICATION SECTOR | MACHINE PERFORMANCE | SECTION | ITEM |
|----------|-----------------|--|--|--|---------|------|
| CRIMPING | MHP 80 | Hand pump, portable | On site repair | Manual machine for small sizes | M1 | 1 |
| | MHP 137 | Hand pump, portable | On site repair | Manual machine for small/medium sizes | | 2 |
| | MB 137 PLUS | Benchtop | Aftermarket service | Medium crimping force, small/medium sizes, limited productivity | | 3 |
| | MB 240 | Benchtop | Aftermarket service | Medium crimping force, medium productivity | | 4 |
| | MB 350 | Benchtop: very high crimp force | Aftermarket service | High crimping force, medium productivity, large size | | 5 |
| | MB 350 L | Benchtop: very high crimp force | Aftermarket service | High crimping force, medium productivity, large size | | 6 |
| | MV 137 | Field service and mobile workshop | On site repair mobile van | Medium crimping force, limited productivity | | 7 |
| | MV 137 L | Field service and mobile workshop | On site repair mobile van | Medium crimping force, limited productivity | | 8 |
| | MV 240 | Field service and mobile workshop | On site repair mobile van | Medium crimping force, limited productivity | | 9 |
| | MV 240 L | Field service and mobile workshop | On site repair mobile van | Medium crimping force, limited productivity | | 10 |
| | MV 350 | Field service and mobile or container workshop | On site repair mobile van | High crimping force, medium productivity, large size | | 11 |
| | GOLDENCRIMP 450 | Benchtop | Field maintenance shops, wide hose range | Very high crimping force, tough environments, large size | | 12 |
| | MVB 140 | Vertical benchtop, cage dies | On site repair; Aftermarket service | Medium crimping force, small/medium sizes, limited productivity | | 13 |
| | MS 140 | Stand type crimp machine | Assembling production unit, small/medium sizes | Medium crimping force, high productivity for small - medium bore | | 14 |
| | MS 280 L | Stand-type crimp machine, SCS control | Aftermarket service, First OEM eq | Medium crimping force, whole size range | | 15 |
| | MS 320 | Stand-type crimp machine, SCS control | Assembling production unit, OEM and distribution | High crimping force, high productivity, large size | | 16 |
| | MS 480 | Stand-type crimp machine, SCS control | Assembling production unit, OEM and large bore focus | Very high crimping force, high productivity, very large opening | | 17 |
| | MS 800 | Stand-type crimp machine, SCS control | Assembling production unit | Very high crimping force for large bore hose focus | | 18 |

ASSEMBLY MACHINES INDEX



| | MODEL | MACHINE TYPE | APPLICATION SECTOR | MACHINE PERFORMANCE | SECTION | ITEM |
|----------------|-----------------|--|---|---------------------------|---------|------|
| CUTTING | M22 CUT | Benchtop | Aftermarket service | Medium size capacity | M2 | 1 |
| | M30 CUT E | Benchtop cutting machine, optional skiving | Aftermarket service | Wide hose range capacity | | 2 |
| | M30 CUT L | Stand type cutting machine | Aftermarket service (smoke absorption integrated) | Wide hose range capacity | | 3 |
| | M30 CUT & SKIVE | Benchtop: integrated cutting & skiving | Aftermarket service | Wide hose range capacity | | 4 |
| | M55 CUT | Stand type cutting machine | Aftermarket service and small-medium OEM workshop | Whole hose range capacity | | 5 |
| | M75 CUT | Stand type cutting machine | Production unit | Whole hose range capacity | | 6 |
| | M90 CUT | Stand type cutting machine | Production unit | Whole hose range capacity | | 7 |
| SKIVING | MH SKY | Manual, portable skiving tool | Aftermarket service | Wide hose range capacity | M3 | 1 |
| | M50 SKY | Benchtop, skiving | Aftermarket service | Wide hose range capacity | | 2 |
| | M205 SKY | Stand type skive machine | Production unit | Whole hose range capacity | | 3 |
| MARKING | M50 MARK | Benchtop, ferrules marking | Aftermarket service | Wide hose range capacity | M4 | 1 |
| INSERT PUSHING | M1500 INS | Benchtop coupling inserter | Production unit | Whole hose range capacity | M5 | 1 |
| TEST BENCH | MTB 1500 | Stand type machine; proof pressure and certif. | Production unit | Wide hose range capacity | M6 | 1 |
| | MTB 2500 | Stand type machine; proof pressure and certif. | Production unit | Wide hose range capacity | | 2 |

MODULAR ASSEMBLY UNITS

In order to simplify the process of selecting appropriate equipment for new workshops, Manuli Hydraulics also offers a range of scaled machine modules. These modules include suitable combinations of cutting and crimping machines (and skiving where appropriate), based on the scale and planned throughput of the intended assembly operation.

| MODULE | | DESCRIPTION | CAPACITY | CUTTING | SKIVING | CRIMPING | |
|--------|--------|-------------------------------|---|-------------------|---------------|--|---|
| M0 | STATIC | Small Service Workshop | <ul style="list-style-type: none"> • 1 1/4" 4WS • 25 Hoses / Day • Mixed sizes | M22 CUT | M50 SKY | MB 137 PLUS |  |
| | MOBILE | | | M22 CUT (12/24 V) | MH SKY | MV 137 (12/24V) |  |
| M1 | STATIC | Intermittent Service Workshop | <ul style="list-style-type: none"> • 2" 4WS • 50 Hoses / Day • Mixed sizes | M30 CUT & SKIVE | | MB 240 |  |
| | MOBILE | | | | | MV 240 (12/24 V or 220 1Ph) |  |
| M2 | STATIC | Continuous Service Workshop | <ul style="list-style-type: none"> • 2" 6WS - 3" 2WB • 100 Hoses / Day • Mixed sizes | M55 CUT | M205 SKY PLUS | MB 350 |  |
| | MOBILE | | | | | MV 350 (12/24 V or 220 1Ph/3Ph) or GoldenCrimp/450 |  |

MODULAR ASSEMBLY UNITS

| MODULE | | DESCRIPTION | CAPACITY | CUTTING | SKIVING | CRIMPING | |
|--------|--------|-----------------------|---|------------|--|----------|---|
| P1 | STATIC | OEM Assembly Workshop | <ul style="list-style-type: none"> 1 1/4" 4WS - 2" 2WB >100 Hoses / Day Mixed sizes | M55 CUT-P | M205 SKY | MS 280 L |  |
| P2 | STATIC | OEM Assembly Workshop | <ul style="list-style-type: none"> 2" 4WS - 3" 2WB >100 Hoses / Day Mixed sizes | M90 CUT | M205 SKY <i>(With reinforced clamping system)</i> | MS 320 | |
| P3 | STATIC | OEM Assembly Workshop | <ul style="list-style-type: none"> 2" 6WS - 3" 4WS >100 Hoses / Day Mixed sizes | M90 CUT | M205 SKY <i>(With reinforced clamping system)</i> | MS 480 | |
| P4 | STATIC | XXL Assembly Workshop | <ul style="list-style-type: none"> 3" 8WS - 4" 4WS - 8" Industrial Hose 50 Hoses / Day Mixed sizes | MDH 15 CUT | MDH 205 SKY | MS 800 |  |

Key

M Maintenance Operations

Intended for small or medium aftermarket, repair service

P Production Operations

Intended for small/medium/large OEM activity or large production aftermarket

DIE SET INDEX

| MODEL | | DIE N° | | | | | | | | | | | | | | | | | | | | | | | | | | | DIE SET PACKAGES | QTY | KIT | |
|--------------------|------|--------|-------|-------|-------|-------|-------|-------|-------|-------|-------|-------|-------|-------|-------|-------|-------|-------|-------|-------|-------|-------|-------|-------|-------|-------|-------|----------------|------------------|----------------|--------|--------|
| | | 10 | 12 | 15 | 18 | 21 | 24 | 27 | 30 | 33 | 36 | 39 | 42 | 45 | 48 | 51 | 57 | 62 | 66 | 70 | 72 | 73 | 76 | 86 | 92 | 95 | 105 | 112 | | | | 130 |
| MHP80 | mm | 56 | 56 | 56 | 56 | 56 | 56 | 56 | 56 | - | - | 56 | - | - | - | - | | | | | | | | | | | | | ESA3110NH80KT | 6 | | |
| | inch | 2.205 | 2.205 | 2.205 | 2.205 | 2.205 | 2.205 | 2.205 | 2.205 | 2.205 | - | - | 2.205 | - | - | - | - | | | | | | | | | | | | | ESA3110NH80KT | 6 | |
| MHP137 | mm | 56 | 56 | 56 | 56 | 56 | 56 | 56 | 56 | 70 | 75 | 70 | 70 | 70 | 70 | 75 | | | | | | | | | | | | | ESA3220N137KT | 10 | KIT 10 | |
| | inch | 2.205 | 2.205 | 2.205 | 2.205 | 2.205 | 2.205 | 2.205 | 2.205 | 2.205 | 2.756 | 2.953 | 2.756 | 2.756 | 2.756 | 2.756 | 2.953 | | | | | | | | | | | | ESA3220NKT13JF | 13 | KIT 13 | |
| MB 137 MV 137 | mm | 56 | 56 | 56 | 56 | 56 | 56 | 56 | 56 | 70 | 75 | 70 | 70 | 70 | 70 | 75 | | | | | | | | | | | | | ESA3220N137KT | 10 | KIT 10 | |
| | inch | 2.205 | 2.205 | 2.205 | 2.205 | 2.205 | 2.205 | 2.205 | 2.205 | 2.205 | 2.756 | 2.953 | 2.756 | 2.756 | 2.756 | 2.756 | 2.953 | | | | | | | | | | | | ESA3220NKT13JF | 13 | KIT 13 | |
| MB 240 MV 240 | mm | 56 | 56 | 56 | 56 | 56 | 70 | 90 | 90 | 90 | 90 | 90 | 90 | 100 | 100 | 100 | 100 | 100 | 100 | 100 | 100 | | | | | | | | ESA3320N240KT | 12 | KIT 12 | |
| | inch | 2.205 | 2.205 | 2.205 | 2.205 | 2.205 | 2.756 | 3.543 | 3.543 | 3.543 | 3.543 | 3.543 | 3.543 | 3.543 | 3.937 | 3.937 | 3.937 | 3.937 | 3.937 | 3.937 | 3.937 | 3.937 | | | | | | | ESA3320N240KTF | 18 | KIT 18 | |
| MB 350 MV 350 | mm | 56 | 56 | 56 | 56 | 56 | 70 | 90 | 90 | 90 | 90 | 90 | 90 | 100 | 100 | 110 | 110 | 110 | 110 | 100 | 100 | 125 | 125 | | 125 | 125 | | | ESA3330N340KT | 13 | KIT 13 | |
| | inch | 2.205 | 2.205 | 2.205 | 2.205 | 2.205 | 2.756 | 3.543 | 3.543 | 3.543 | 3.543 | 3.543 | 3.543 | 3.543 | 3.937 | 3.937 | 4.331 | 4.331 | 4.331 | 4.331 | 3.937 | 3.937 | 4.921 | 4.921 | | 4.921 | 4.921 | | ESA3330N340KTF | 20 | KIT 20 | |
| GOLDENCRIMP 450 | mm | 56 | 56 | 56 | 56 | 56 | 70 | 90 | 90 | 90 | 90 | 90 | 90 | 100 | 100 | 110 | 110 | 110 | 110 | 100 | 100 | 125 | 125 | 150 | 125 | 150 | 150 | 150 | ESA3330N450KT | 13 | KIT 13 | |
| | inch | 2.205 | 2.205 | 2.205 | 2.205 | 2.205 | 2.756 | 3.543 | 3.543 | 3.543 | 3.543 | 3.543 | 3.543 | 3.543 | 3.937 | 3.937 | 4.331 | 4.331 | 4.331 | 4.331 | 3.937 | 3.937 | 4.921 | 4.921 | 5.906 | 4.921 | 5.906 | 5.906 | 5.906 | ESA3330N450KTF | 20 | KIT 20 |
| MS140 | mm | 56 | 70 | 70 | 70 | 70 | 70 | 70 | 70 | 70 | 75 | 70 | 70 | 70 | 70 | 75 | | | | | | | | | | | | | ESA3540N140KT | 10 | KIT 10 | |
| | inch | 2.205 | 2.756 | 2.756 | 2.756 | 2.756 | 2.756 | 2.756 | 2.756 | 2.756 | 2.756 | 2.953 | 2.756 | 2.756 | 2.756 | 2.756 | 2.953 | | | | | | | | | | | | ESA3540N140KTF | 12 | KIT 12 | |
| MS280L | mm | 56 | 56 | 56 | 56 | 56 | 70 | 90 | 90 | 90 | 90 | 90 | 90 | 100 | 100 | 100 | 100 | 110 | 100 | 100 | 100 | | | | | | | - | 18 | | | |
| | inch | 2.205 | 2.205 | 2.205 | 2.205 | 2.205 | 2.756 | 3.543 | 3.543 | 3.543 | 3.543 | 3.543 | 3.543 | 3.543 | 3.937 | 3.937 | 3.937 | 3.937 | 4.331 | 3.937 | 3.937 | 3.937 | | | | | | ESA3320N240KTF | 18 | KIT 18 | | |
| MS320 | mm | 90 | 90 | 90 | 90 | 90 | 90 | 90 | 90 | 90 | 90 | 90 | 90 | 95 | 100 | 110 | 110 | 110 | 110 | 100 | 100 | 120 | 120 | - | 125 | 125 | | | ESA3540N320KT | 13 | KIT 13 | |
| | inch | 3.543 | 3.543 | 3.543 | 3.543 | 3.543 | 3.543 | 3.543 | 3.543 | 3.543 | 3.543 | 3.543 | 3.543 | 3.543 | 3.740 | 3.937 | 4.331 | 4.331 | 4.331 | 4.331 | 3.937 | 3.937 | 4.724 | 4.724 | | 4.921 | 4.921 | | ESA3540N320KTF | 20 | KIT 20 | |
| MS480 | mm | 90 | 90 | 90 | 90 | 90 | 90 | 90 | 100 | 90 | 90 | 90 | 90 | 100 | 100 | 110 | 110 | 110 | 110 | 100 | 100 | 125 | 125 | 150 | 125 | 150 | 150 | 150 | ESA3540N480KT | 13 | KIT 13 | |
| | inch | 3.543 | 3.543 | 3.543 | 3.543 | 3.543 | 3.543 | 3.543 | 3.937 | 3.543 | 3.543 | 3.543 | 3.543 | 3.543 | 3.937 | 3.937 | 4.331 | 4.331 | 4.331 | 4.331 | 3.937 | 3.937 | 4.921 | 4.921 | 5.906 | 4.921 | 5.906 | 5.906 | 5.906 | ESA3540N480KTF | 20 | KIT 20 |
| MS800 | mm | | | 90 | 90 | 90 | 90 | 90 | 100 | 90 | | 90 | 90 | 100 | 100 | 110 | 110 | 110 | 110 | 100 | 100 | 125 | 125 | 150 | 125 | 150 | 180 | 150 | 180 | ESA3540N480KT | 13 | KIT 13 |
| | inch | | | 3.543 | 3.543 | 3.543 | 3.543 | 3.543 | 3.937 | 3.543 | | 3.543 | 3.543 | 3.937 | 3.937 | 4.331 | 4.331 | 4.331 | 4.331 | 3.937 | 3.937 | 4.921 | 4.921 | 5.906 | 4.921 | 5.906 | 7.087 | 5.906 | 7.087 | ESA3540N800KTF | 18 | KIT 18 |

- xx Die set standard package
- xx Die set full package
- xx Optional die sets
- xx Diamondspir die sets (optional)
- xx Master die

CRIMPING MACHINES

MHP 80

FIELD SERVICE & MOBILE WORKSHOP

HAND PUMP, PORTABLE



KEY ADVANTAGES

- Compact
- Lightweight
- Easy to use
- Balanced design
- Dual stage pump

MAIN APPLICATIONS

Dedicated to repair shops or maintenance departments making low volumes of small and medium sized hose assemblies. Also ideal for carrying out on-site repairs.

TECHNICAL SPECIFICATIONS

| | | | |
|----------------------|------------------------------------|---------------------------|----------------------------|
| Dimensions: | 330 x 250 x 400 mm (13 x 10 x 16") | Crimp Range: | 4 - 43 mm (0.157 - 1.693") |
| Net Weight: | 28 kg (62 lb) | Crimp Force: | 80 t |
| Packaging: | 800 x 600 x 830 mm (31 x 24 x 33") | Opening with Dies: | +20 mm (+0.787") |
| Gross Weight: | 41 kg (90 lb) | Complete Opening: | 59 mm (2.323") |
| Capacity: | 2wb: 1" max. | Master Die Length: | 56 mm (2.205") |
| | 4ws: 1/2" max. | Standard Dies: | 15, 18, 21, 24, 27, 30, 39 |

Technical Features:

- Hand pump: 5000 psi (double speed)
- Options available: hydropneumatic pump

HOSE AND FITTING SELECTION

| Hose Type | Fittings Type | Max. Hose Size | Ref. Hoses |
|------------------------|-----------------|----------------|---|
| 2 Wire Braid & Textile | MF2000 Multifit | 1" | Tractor; Harvester; Lyteflex; Pilot; Cover; Equator; Rockmaster (braided); Shieldmaster (braided); Astro; Multitex; Hydroplast; Spirtex/K |
| 4 Wire Spirals | MF2000 Multifit | 1/2" | Rockmaster/12; Rockmaster/4SP; Shieldmaster 6000 (DN10 & DN12 spiral) |

ORDERING INFORMATION

| Product Code | Description |
|-------------------|---------------------------|
| EOA3110NMHP80 | MHP 80 (NO DIES) |
| EOA3110NMHP80PPPM | MHP 80 MANUAL PUMP + PPPM |

CRIMPING MACHINES

MHP 80

FIELD SERVICE & MOBILE WORKSHOP

HAND PUMP, PORTABLE

AVAILABLE DIE SETS

| Product Code | Description | N° | Crimp Range | Die Length (mm) | Die Length (inch) |
|--------------------|--|----|-------------|-----------------|-------------------|
| ESA3110N80-06 | Die set n. 06 - length 56 mm | 6 | 06-08 | 56 | 2.205 |
| ESA3220NL056D008L2 | Die set n. 08 - length 56 mm | 8 | 08-10 | 56 | 2.205 |
| ESA3110N80-10 | Die set n. 10 - length 56 mm | 10 | 10-12 | 56 | 2.205 |
| ESA3110N80-12 | Die set n. 12 - length 56 mm | 12 | 12-15 | 56 | 2.205 |
| ESA3110N80-15 | Die set n. 15 - length 56 mm | 15 | 15-18 | 56 | 2.205 |
| ESA3110N80-18 | Die set n. 18 - length 56 mm | 18 | 18-21 | 56 | 2.205 |
| ESA3110N80-21 | Die set n. 21 - length 56 mm | 21 | 21-24 | 56 | 2.205 |
| ESA3110N80-24 | Die set n. 24 - length 56 mm | 24 | 24-27 | 56 | 2.205 |
| ESA3110N80-27 | Die set n. 27 - length 56 mm | 27 | 27-30 | 56 | 2.205 |
| ESA3110N80-30 | Die set n. 30 - length 56 mm | 30 | 30-43 | 56 | 2.205 |
| ESA3110NH80KT | Kit 6 dies MHP80/HCRIMP80 (n.15 to n.30) | - | - | - | - |

CRIMPING MACHINES

MHP 137

FIELD SERVICE & MOBILE WORKSHOP

HAND PUMP, PORTABLE



KEY ADVANTAGES

- High capacity
- Narrow head
- Audio-visual signal
- 350 bar technology more robust & reliable than 700 bar
- Large opening

MAIN APPLICATIONS

Dedicated to repair shops or maintenance departments making low volumes of small and medium sized hose assemblies. Can also be used in a vehicle for on-site repairs.

TECHNICAL SPECIFICATIONS

| | | | |
|----------------------------|--------------------------------------|---------------------------|--|
| Dimensions: | 480 x 250 x 340 mm (19 x 10 x 13") | Crimp Range: | 4 - 70 mm (0.157 - 2.756") |
| Net Weight: | 55 kg (121 lb) | Crimp Force: | 137 t |
| Packaging: | 800 x 600 x 830 mm (31 x 24 x 33") | Opening with Dies: | +28 mm (+1.102") |
| Gross Weight: | 75 kg (165 lb) | Complete Opening: | 100 mm (3.937") |
| Capacity: | 2wb: 1 1/4" max. 4ws: 1 1/4" max. | Master Die Length: | 75 mm (2.362") |
| Technical Features: | | Standard Dies: | 15, 18, 21, 24, 27, 30, 33, 36, 39, 42, 45, 48, 51 and Refrifast dies 14, 18, 21 |

Options available: Hydropneumatic pump

HOSE AND FITTING SELECTION

| Hose Type | Fittings Type | Max. Hose Size | Ref. Hoses |
|------------------------|---|--------------------------------|---|
| 2 Wire Braid & Textile | MF2000 Multifit; MF3000 OPF; MF3000 OPK | 1 1/4" (with extra dies 45/51) | Tractor; Harvester; Lyteflex; Pilot; Cover; Equator; Rockmaster (braided); Shieldmaster (braided); Astro; Multitex; Hydroplast; Spirtex/K |
| 4 Wire Spirals | MF2000 Multifit; MF3000 OPF; MF3000 OPK | 1 1/4" (with extra dies 45/51) | Rockmaster (spiral); Shieldmaster (spiral); GoldenISO Xtraflex |
| 4 Wire Spirals | MF2000 Interlock Plus; MF2000 Xtralock | 3/4" | Rockmaster (spiral); Shieldmaster (spiral); GoldenISO Xtraflex |

ORDERING INFORMATION

| Product Code | Description |
|--------------------|-------------|
| EOA3110NMHP137P2 | MHP 137 |
| EOA3110NMHP137PHP | MHP 137 HP |
| EOA3110NMHP137PHPM | MHP 137 HPM |

CRIMPING MACHINES

MHP 137

FIELD SERVICE & MOBILE WORKSHOP

HAND PUMP, PORTABLE

AVAILABLE DIE SETS

| Product Code | Description | N° | Crimp Range | Die Length (mm) | Die Length (inch) |
|-----------------|---|----|-------------|-----------------|-------------------|
| ESA3220NL56-6 | Die set n. 6 - length 56 mm | 6 | 06-08 | 56 | 2.205 |
| ESA3220NL56-8 | Die set n. 8 - length 56 mm | 8 | 08-10 | 56 | 2.205 |
| ESA3220NL56-10 | Die set n. 10 - length 56 mm | 10 | 10-12 | 56 | 2.205 |
| ESA3220NL56-12 | Die set n. 12 - length 56 mm | 12 | 12-15 | 56 | 2.205 |
| ESA3220NL56-15 | Die set n. 15 - length 56 mm | 15 | 15-18 | 56 | 2.205 |
| ESA3220NL56-17 | Die set n. 17 - length 56 mm | 17 | 17-18 | 56 | 2.205 |
| ESA3220NL56-18 | Die set n. 18 - length 56 mm | 18 | 18-21 | 56 | 2.205 |
| ESA3220NL56-20 | Die set n. 20 - length 56 mm | 20 | 20-21 | 56 | 2.205 |
| ESA3220NL56-21 | Die set n. 21 - length 56 mm | 21 | 21-24 | 56 | 2.205 |
| ESA3220N137-24 | Die set n. 24 - length 56 mm | 24 | 24-27 | 56 | 2.205 |
| ESA3220N137-27 | Die set n. 27 - length 56 mm | 27 | 27-30 | 56 | 2.205 |
| ESA3220N137-30 | Die set n. 30 - length 56 mm | 30 | 30-33 | 56 | 2.205 |
| ESA3220N137-33 | Die set n. 33 - length 70 mm | 33 | 33-36 | 70 | 2.756 |
| ESA3220N75-36 | Die set n. 36 - length 75 mm | 36 | 36-39 | 75 | 2.953 |
| ESA3220N137-39 | Die set n. 39 - length 70 mm | 39 | 39-42 | 70 | 2.756 |
| ESA3320N140-42 | Die set n. 42 - length 70 mm | 42 | 42-45 | 70 | 2.756 |
| ESA3220N137-45 | Die set n. 45 - length 70 mm | 45 | 45-48 | 70 | 2.756 |
| ESA3220N137-48 | Die set n. 48 - length 70 mm | 48 | 48-51 | 70 | 2.756 |
| ESA3220N137-51 | Die set n. 51 - length 75 mm | 51 | 51-57 | 75 | 2.953 |
| ESA3220N137KT | Kit 10 dies MB137/S/MV137(n.15 to n.48) | - | - | - | - |
| ESA3220N137KT9J | Kit 9 dies MB137/S/MV137 (n.15 to n.48) | - | - | - | - |
| ESA3220NKIT6J | Kit 6 dies MB137/S/MV137 (n.15 to n.39) | - | - | - | - |
| ESA3220N137KTF | Kit 13 dies MB137/S/MV137(n.15 to n.51) | - | - | - | - |

Notes:

Refrigeration hose special dies available upon request

CRIMPING MACHINES



MB 137 PLUS

SMALL SERVICE WORKSHOP (1 1/4" 4WS)

BENCHTOP

KEY ADVANTAGES

- Compact, short head
- Micrometer and cylinder protection
- Large opening
- Die storage included
- Easy to move
- Accurate
- Easy die set up
- Ergonomic design

MAIN APPLICATIONS

Dedicated to maintenance departments or repair shops, as well as hose distributors.

TECHNICAL SPECIFICATIONS

| | | | |
|----------------------|------------------------------------|----------------------------|-------------------------------------|
| Dimensions: | 600 x 650 x 550 mm (24 x 26 x 22") | Motor: | 2.2 kW |
| Net Weight: | 120 kg (265 lb) | Noise Level: | 72 dB A |
| Packaging: | 800 x 600 x 830 mm (31 x 24 x 33") | Crimp Range: | 4 - 70 mm (0.157 - 2.756") |
| Gross Weight: | 130 kg (287 lb) | Crimp Force: | 137 t |
| Voltages: | 220/240 V, 3Ph, 50 Hz | Opening with Dies: | +28 mm (+1.102") |
| | 380/415 V, 3Ph, 50 Hz | Complete Opening: | 100 mm (3.937") |
| | 208/240 V, 3Ph, 60 Hz | Master Die Length: | 75 mm (2.953") |
| | 380/415 V, 3Ph, 60 Hz | Standard Dies: | 15, 18, 21, 24, 27, 30, 33 |
| Capacity: | 2wb: 1 1/4" max. | | 36, 39, 42, 45, 48, 51 |
| | 4ws: 1 1/4" max. | Technical Features: | Other voltages available on request |

HOSE AND FITTING SELECTION

| Hose Type | Fittings Type | Max. Hose Size | Ref. Hoses |
|------------------------|---|----------------|---|
| 2 Wire Braid & Textile | MF2000 Multifit; MF3000 OPF; MF3000 OPK | 1 1/4" | Tractor; Harvester; Lyteflex; Pilot; Cover; Equator; Rockmaster (braided); Shieldmaster (braided); Astro; Multitex; Hydroplast; Spirtex/K |
| 4 Wire Spirals | MF2000 Multifit; MF3000 OPF; MF3000 OPK | 1 1/4" | Rockmaster (spiral); Shieldmaster (spiral); GoldenISO Xtraflex |
| 4 Wire Spirals | MF2000 Interlock Plus; MF2000 Xtralock | 3/4" | Rockmaster (spiral); Shieldmaster (spiral); GoldenISO Xtraflex |



Performances measured on a 400 V, 3Ph, 50 Hz network

CRIMPING MACHINES

MB 137 PLUS

SMALL WORKSHOP SERVICE (1¼" 4WS)

BENCHTOP

ORDERING INFORMATION

| Product Code | Description |
|---------------|---------------------------|
| EOA3224NMB137 | MB 137+ 380/415V 3PH 50HZ |
| EOA3227NMB137 | MB 137+ 220/240V 3PH 50HZ |
| EOA3229NMB137 | MB 137+ 208/240V 3PH 60HZ |
| EOA322BNMB137 | MB 137+ 380/415V 3PH 60HZ |

AVAILABLE DIE SETS

| Product Code | Description | N° | Crimp Range | Die Length (mm) | Die Length (inch) |
|-----------------|--|----|-------------|-----------------|-------------------|
| ESA3220NL56-6 | Die set n. 6 - length 56 mm | 6 | 06-08 | 56 | 2.205 |
| ESA3220NL56-8 | Die set n. 8 - length 56 mm | 8 | 08-10 | 56 | 2.205 |
| ESA3220NL56-10 | Die set n. 10 - length 56 mm | 10 | 10-12 | 56 | 2.205 |
| ESA3220NL56-12 | Die set n. 12 - length 56 mm | 12 | 12-15 | 56 | 2.205 |
| ESA3220NL56-15 | Die set n. 15 - length 56 mm | 15 | 15-18 | 56 | 2.205 |
| ESA3220NL56-17 | Die set n. 17 - length 56 mm | 17 | 17-18 | 56 | 2.205 |
| ESA3220NL56-18 | Die set n. 18 - length 56 mm | 18 | 18-21 | 56 | 2.205 |
| ESA3220NL56-20 | Die set n. 20 - length 56 mm | 20 | 20-21 | 56 | 2.205 |
| ESA3220NL56-21 | Die set n. 21 - length 56 mm | 21 | 21-24 | 56 | 2.205 |
| ESA3220N137-24 | Die set n. 24 - length 56 mm | 24 | 24-27 | 56 | 2.205 |
| ESA3220N137-27 | Die set n. 27 - length 56 mm | 27 | 27-30 | 56 | 2.205 |
| ESA3220N137-30 | Die set n. 30 - length 56 mm | 30 | 30-33 | 56 | 2.205 |
| ESA3220N137-33 | Die set n. 33 - length 70 mm | 33 | 33-36 | 70 | 2.756 |
| ESA3220N75-36 | Die set n. 36 - length 75 mm | 36 | 36-39 | 75 | 2.953 |
| ESA3220N137-39 | Die set n. 39 - length 70 mm | 39 | 39-42 | 70 | 2.756 |
| ESA3320N140-42 | Die set n. 42 - length 70 mm | 42 | 42-45 | 70 | 2.756 |
| ESA3220N137-45 | Die set n. 45 - length 70 mm | 45 | 45-48 | 70 | 2.756 |
| ESA3220N137-48 | Die set n. 48 - length 70 mm | 48 | 48-51 | 70 | 2.756 |
| ESA3220N137-51 | Die set n. 51 - length 75 mm | 51 | 51-57 | 75 | 2.953 |
| ESA3220N137KT | Kit 10 dies MB137+/S/MV137(n.15 to n.48) | - | - | - | - |
| ESA3220N137KT9J | Kit 9 dies MB137+/S/MV137 (n.15 to n.48) | - | - | - | - |
| ESA3220NKIT6J | Kit 6 dies MB137+/S/MV137 (n.15 to n.39) | - | - | - | - |
| ESA3220N137KTF | Kit 13 dies MB137+/S/MV137(n.15 to n.51) | - | - | - | - |

Notes:

Refrigeration hose special dies available upon request

CRIMPING MACHINES

MB 240

PROFESSIONAL WORKSHOP

BENCHTOP



KEY ADVANTAGES

- Ergonomic micrometer
- Radial die movement
- High crimping force
- Electronic control including counters and semi-automatic opening
- Built-in safety system to prevent incorrect die choice
- Cylinder protection
- Easy front access for elbow fittings
- Energy savings

MAIN APPLICATIONS

Dedicated to hydraulic maintenance specialists working on medium sized machines and equipment. Also suitable for assemblers involved in medium sized hoses and quantities.

TECHNICAL SPECIFICATIONS

| | | | |
|----------------------|--------------------------------------|---------------------------|---|
| Dimensions: | 1120 x 670 x 915 mm (44 x 26 x 36") | Motor: | 4.0 kW |
| Net Weight: | 190 kg (419 lb) | Noise Level: | 66 dB A |
| Packaging: | 1170 x 770 x 1100 mm (46 x 30 x 43") | Crimp Range: | 4 - 76 mm (0.157 - 2.992") |
| Gross Weight: | 234 kg (516 lb) | Crimp Force: | 240 t |
| Voltages: | 220/240 V, 3Ph, 50 Hz | Opening with Dies: | +38 mm (+1.496") |
| | 380/415 V, 3Ph, 50 Hz | Complete Opening: | 118 mm (4.645") |
| | 208/240 V, 3Ph, 60 Hz | Master Die Length: | 100 mm (3.937") |
| | 380/415 V, 3Ph, 60 Hz | Standard Dies: | 15, 18, 21, 24, 27, 30, 33, 36, 39, 42, 45, 48, 51, 57, 62, 66, 70, 72 |
| Capacity: | 2ws: 2" max. | | |
| | 4ws: 2" max. | | |
| | 6ws: 1" max. | | |

HOSE AND FITTING SELECTION

| Hose Type | Fittings Type | Max. Hose Size | Ref. Hoses |
|------------------------|--|----------------|---|
| 2 Wire Braid & Textile | MF2000 Multifit; MF3000 OPF; MF3000 OPK | 2" | Tractor; Harvester; Lyteflex; Pilot; Cover; Equator; Rockmaster (braided); Shieldmaster (braided); Astro; Multitex; Hydroplast; Spirtex/K |
| 4 Wire Spirals | MF2000 Multifit; MF3000 OPF; MF3000 OPK | 2" | Rockmaster (spiral); Shieldmaster (spiral); GoldenISO Xtraflex |
| 4 Wire Spirals | MF2000 Interlock Plus; MF2000 Xtralock; MF2000 Spiralfit | 1 1/4" | Rockmaster (spiral); Shieldmaster (spiral); GoldenISO Xtraflex |
| 6 Wire Spirals | MF2000 Interlock Plus; MF2000 Xtralock | 1" | Diamondspir; Goldenblast/Six |



Performances measured on a 400 V, 3Ph, 50 Hz network

CRIMPING MACHINES

MB 240

PROFESSIONAL WORKSHOP

BENCHTOP

ORDERING INFORMATION

| Product Code | Description |
|----------------|--------------------------|
| EOA3324NMB240P | MB 240 380/415V 3PH 50HZ |
| EOA3327NMB240P | MB 240 220/240V 3PH 50HZ |
| EOA3329NMB240P | MB 240 208/240V 3PH 60HZ |
| EOA332BNMB240P | MB 240 380/415V 3PH 60HZ |

AVAILABLE DIE SETS

| Product Code | Description | N° | Crimp Range | Die Length (mm) | Die Length (inch) |
|--------------------|--|----|-------------|-----------------|-------------------|
| ESA3220NL56-10 | Die set n. 10 - length 56 mm | 10 | 10-12 | 56 | 2.205 |
| ESA3220NL56-12 | Die set n. 12 - length 56 mm | 12 | 12-15 | 56 | 2.205 |
| ESA3220NL56-15 | Die set n. 15 - length 56 mm | 15 | 15-18 | 56 | 2.205 |
| ESA3220NL56-18 | Die set n. 18 - length 56 mm | 18 | 18-21 | 56 | 2.205 |
| ESA3220NL56-21 | Die set n. 21 - length 56 mm | 21 | 21-24 | 56 | 2.205 |
| ESA3320N140-24 | Die set n. 24 - length 70 mm | 24 | 24-27 | 70 | 2.756 |
| ESA3320NL90-27 | Die set n. 27 - length 90 mm | 27 | 27-30 | 90 | 3.543 |
| ESA3320NL90-30 | Die set n. 30 - length 90 mm | 30 | 30-33 | 90 | 3.543 |
| ESA3320NL90-33 | Die set n. 33 - length 90 mm | 33 | 33-36 | 90 | 3.543 |
| ESA3320NL90-36 | Die set n. 36 - length 90 mm | 36 | 36-39 | 90 | 3.543 |
| ESA3320NL90-39 | Die set n. 39 - length 90 mm | 39 | 39-42 | 90 | 3.543 |
| ESA3320NL90-42 | Die set n. 42 - length 90 mm | 42 | 42-45 | 90 | 3.543 |
| ESA3320N100-45 | Die set n. 45 - length 100 mm | 45 | 45-48 | 100 | 3.937 |
| ESA3320NL100-48 | Die set n. 48 - length 100 mm | 48 | 48-51 | 100 | 3.937 |
| ESA3320N100-51 | Die set n. 51 - length 100 mm | 51 | 51-57 | 100 | 3.937 |
| ESA3320N100-54 | Die set n. 54 - length 100 mm | 54 | 54-57 | 100 | 3.937 |
| ESA3320N100-57 | Die set n. 57 - length 100 mm | 57 | 57-62 | 100 | 3.937 |
| ESA3320N100-62 | Die set n. 62 - length 110 mm | 62 | 62-66 | 110 | 4.331 |
| ESA3320N100-66 | Die set n. 66 - length 100 mm | 66 | 66-70 | 100 | 3.937 |
| ESA3320N100-70 | Die set n. 70 - length 100 mm | 70 | 70-72 | 100 | 3.937 |
| ESA3330NL100D072L2 | Die set n. 72 - length 100 mm | 72 | 72-73 | 100 | 3.937 |
| ESA3320N240KT | Kit 12 dies MB240/MV240 (n.15 to n.66) | - | - | - | - |
| ESA3320N240KTF | Kit 18 dies MB240/MV240 (n.15 to n.72) | - | - | - | - |

Notes:

Refrigeration hose special dies available upon request

CRIMPING MACHINES

MB 350

FULL SERVICE WORKSHOP

BENCHTOP; VERY HIGH CRIMP FORCE



KEY ADVANTAGES

- High power and large opening in a very compact design
- Radial die movement (easy positioning of fitting: no axial movement during crimping)
- Groove for 90° long drop fittings
- Energy savings (stop & start concept)
- Electronic control including counter and semi-automatic opening
- Easy set up with ergonomic, intuitive and precise micrometer

MAIN APPLICATIONS

Dedicated to professional hydraulic maintenance specialists, professional service workshops, and large bore after-market hose assemblers.

TECHNICAL SPECIFICATIONS

| | | | |
|----------------------|---------------------------------------|----------------------------|--|
| Dimensions: | 1005 x 655 x 668 mm (40 x 26 x 26.5") | Motor: | 5.5 kW |
| Net Weight: | 290 kg (639 lb) | Noise Level: | <65 dB A |
| Packaging: | 1170 x 760 x 1100 mm (46 x 30 x 43") | Crimp Range: | 4 - 130 mm (0.157 - 5.118") |
| Gross Weight: | 350 kg (772 lb) | Crimp Force: | 350 t |
| Voltages: | 220/240 V, 3Ph, 50 Hz | Opening with Dies: | +54 mm (+2.125") |
| | 380/415 V, 3Ph, 50 Hz | Complete Opening: | 180 mm (7.086") |
| | 208/240 V, 3Ph, 60 Hz | Master Die Length: | 115 mm (4.523") |
| | 380/415 V, 3Ph, 60 Hz | Standard Dies: | 15, 18, 21, 24, 27, 30, 33, 36, 39, 42, 45, 48, 51, 57, 62, 66, 70, 72, 73, 76 |
| Capacity: | 2wb: 3" max. | Technical Features: | - Automatic maintenance alerts - Cylinder protection against dust - durable design |
| | Textile / Suction Hose: 4" max. | Safety remarks: | Please consider hose-fitting-machine integration when crimping. Possible limitations in case of double elbow fittings. |
| | 4ws: 2" max. | | |
| | 6ws: 2" max. | | |

HOSE AND FITTING SELECTION

| Hose Type | Fittings Type | Max. Hose Size | Ref. Hoses |
|------------------------|--|--------------------|---|
| 2 Wire Braid & Textile | MF2000 Multifit; MF3000 OPF; MF3000 OPK | 3" with extra dies | Tractor; Harvester; Lyteflex; Pilot; Cover; Equator; Rockmaster (braided); Shieldmaster (braided); Astro; Multitex; Hydroplast; Spirtex/K |
| 4 Wire Spirals | MF2000 Multifit; MF2000 Interlock Plus; MF2000 Spiralfit; MF3000 OPF; MF3000 OPK | 2" | Rockmaster (spiral); Shieldmaster (spiral); GoldenISO Xtraflex; Goldenblast |
| 6 Wire Spirals | MF2000 Interlock Plus; MF2000 Spiralfit | 2" | Rockmaster/13; GoldenIso/35 Xtraflex; Goldenblast |
| 6 Wire Spirals | MF2000 Interlock Plus; MF2000 Spiralfit; MF2000 Xtralock | 1½" | Diamondspir; Rockmaster/15; GoldenISO/42 Xtraflex; Shieldmaster/6000 |



Performances measured on a 400 V, 3Ph, 50 Hz network

CRIMPING MACHINES

MB 350

FULL SERVICE WORKSHOP

BENCHTOP, VERY HIGH CRIMP FORCE

ORDERING INFORMATION

| Product Code | Description |
|------------------|--------------------------------|
| EOA3324NMB350P | MB 350+380/415V 3PH 50HZ |
| EOA3334NMB350SCS | MB 350 380/415V 3PH 50HZ 5.5KW |
| EOA3327NMB350P | MB 350 220/240V 3PH 50HZ |
| EOA3337NMB350SCS | MB 350 220/240V 3PH 50HZ 5.5KW |
| EOA3329NMB350P | MB 350 208/240V 3PH 60HZ |
| EOA3339NMB350SCS | MB 350 208/240V 3PH 60HZ 5.5KW |
| EOA332BNMB350P | MB 350 380/415V 3PH 60HZ |

AVAILABLE DIE SETS

| Product Code | Description | N° | Crimp Range | Die Length (mm) | Die Length (inch) |
|--------------------|--|----|-------------|-----------------|-------------------|
| ESA3220NL56-10 | Die set n. 10 - length 56 mm | 10 | 10-12 | 56 | 2.205 |
| ESA3220NL56-12 | Die set n. 12 - length 56 mm | 12 | 12-15 | 56 | 2.205 |
| ESA3220NL56-15 | Die set n. 15 - length 56 mm | 15 | 15-18 | 56 | 2.205 |
| ESA3220NL56-18 | Die set n. 18 - length 56 mm | 18 | 18-21 | 56 | 2.205 |
| ESA3220NL56-21 | Die set n. 21 - length 56 mm | 21 | 21-24 | 56 | 2.205 |
| ESA3320N140-24 | Die set n. 24 - length 70 mm | 24 | 24-27 | 70 | 2.756 |
| ESA3320NL90-27 | Die set n. 27 - length 90 mm | 27 | 27-30 | 90 | 3.543 |
| ESA3320NL90-30 | Die set n. 30 - length 90 mm | 30 | 30-33 | 90 | 3.543 |
| ESA3320NL90-33 | Die set n. 33 - length 90 mm | 33 | 33-36 | 90 | 3.543 |
| ESA3320NL90-36 | Die set n. 36 - length 90 mm | 36 | 36-39 | 90 | 3.543 |
| ESA3320NL90-39 | Die set n. 39 - length 90 mm | 39 | 39-42 | 90 | 3.543 |
| ESA3320NL90-42 | Die set n. 42 - length 90 mm | 42 | 42-45 | 90 | 3.543 |
| ESA3320N100-45 | Die set n. 45 - length 100 mm | 45 | 45-48 | 100 | 3.937 |
| ESA3320NL100-48 | Die set n. 48 - length 100 mm | 48 | 48-51 | 100 | 3.937 |
| ESA3320N110-51 | Die set n. 51 - length 110 mm | 51 | 51-57 | 110 | 4.331 |
| ESA3320N110-57 | Die set n. 57 - length 110 mm | 57 | 57-62 | 110 | 4.331 |
| ESA3320N110-62 | Die set n. 62 - length 110 mm | 62 | 62-66 | 110 | 4.331 |
| ESA3330N125-66 | Die set n. 66 - length 110 mm | 66 | 66-70 | 110 | 4.331 |
| ESA3320N100-70 | Die set n. 70 - length 100 mm | 70 | 70-72 | 100 | 3.937 |
| ESA3330NL100D072L2 | Die set n. 72 - length 100 mm | 72 | 72-73 | 100 | 3.937 |
| ESA3540N125-73 | Die set n. 73 - length 125 mm | 73 | 73-76 | 125 | 4.921 |
| ESA3540N125-76A | Die set n. 76 - length 125 mm | 76 | 76-86 | 125 | 4.921 |
| ESA3540N125-90 | Die set n. 90 - length 125 mm | 90 | 90-95 | 125 | 4.921 |
| ESA3540N12595 | Die set n. 95 - length 125 mm | 95 | 95-105 | 125 | 4.921 |
| ESA3330N340KT | Kit 13 dies MB350/L/MV350 (n.15 to n.73) | - | - | - | - |
| ESA3330N340KTF | Kit 20 dies MB350/L/MV350 (n.15 to n.76) | - | - | - | - |

Notes:

Refrigeration hose special dies available upon request

CRIMPING MACHINES

MB 350 L

FULL SERVICE WORKSHOP

BENCHTOP; VERY HIGH CRIMP FORCE



KEY ADVANTAGES

- High power and large opening in a very compact design
- Radial die movement (easy positioning of fitting: no axial movement during crimping)
- Groove for 90° long drop fittings
- Energy savings (stop & start concept)
- Electronic control including counter and semi-automatic opening
- Easy set up with ergonomic, intuitive and precise micrometer

MAIN APPLICATIONS

Dedicated to professional hydraulic maintenance specialists, professional service workshops, and large bore after-market hose assemblers.

TECHNICAL SPECIFICATIONS

Dimensions: 1005 x 655 x 668 mm (40 x 26 x 26.5")
Net Weight: 260 kg (573 lb)
Packaging: 1170 x 760 x 1100 mm (46 x 30 x 43")
Gross Weight: 350 kg (772 lb)
Voltages: 220/240 V, 3Ph, 50 Hz
 380/415 V, 3Ph, 50 Hz
 208/240 V, 3Ph, 60 Hz
 380/415 V, 3Ph, 60 Hz
Capacity: 2wb: 3" max.
 Textile / Suction Hose: 4" max.
 4ws: 2" max.
 6ws: 1½" max.

Motor: 4.0 kW
Noise Level: <65 dB A
Crimp Range: 4 - 130 mm (0.157 - 5.118")
Crimp Force: 350 t
Opening with Dies: +54 mm (+2.125")
Complete Opening: 180 mm (7.086")
Master Die Length: 115 mm (4.523")
Standard Dies: 15, 18, 21, 24, 27, 30, 33, 36, 39, 42,
 45, 48, 51, 57, 62, 66, 70, 72, 73, 76

Technical Features:

- Automatic maintenance alerts
- Cylinder protection against dust (durable design)

Safety Remarks:

Please consider hose-fitting-machine integration when crimping. Possible limitations in case of double elbow fittings.

HOSE AND FITTING SELECTION

| Hose Type | Fittings Type | Max. Hose Size | Ref. Hoses |
|------------------------|---|--------------------|---|
| 2 Wire Braid & Textile | MF2000 Multifit; MF3000 OPF; MF3000 OPK | 3" with extra dies | Tractor; Harvester; Lyteflex; Pilot; Cover; Equator; Rockmaster (braided); Shieldmaster (braided); Astro; Multitex; Hydroplast; Spirtex/K |
| 4 Wire Spirals | MF2000 Multifit; MF2000 Interlock Plus; MF2000 Xtralock; MF2000 Spiralfit; MF3000 OPF; MF3000 OPK | 2" | Rockmaster (spiral); Shieldmaster (spiral); GoldenISO Xtraflex; Goldenblast |
| 6 Wire Spirals | MF2000 Interlock Plus; MF2000 Xtralock; MF2000 Spiralfit | 1½" | Rockmaster/13; Rockmaster/15; GoldenISO/35 Xtraflex; GoldenISO/42 Xtraflex; Diamondspir; Shieldmaster/6000; Goldenblast/six |



Performances measured on a 400 V, 3Ph, 50 Hz network

CRIMPING MACHINES

MB 350 L

FULL SERVICE WORKSHOP

BENCHTOP; VERY HIGH CRIMP FORCE

ORDERING INFORMATION

| Product Code | Description |
|-----------------|----------------------------|
| EOA3324NMB350LP | MB 350 L 380/415V 3PH 50HZ |
| EOA3327NMB350LP | MB 350 L 220/240V 3PH 50HZ |
| EOA3329NMB350LP | MB 350 L 208/240V 3PH 60HZ |
| EOA332BNMB350LP | MB 350 L 380/415V 3PH 60HZ |

AVAILABLE DIE SETS

| Product Code | Description | N° | Crimp Range | Die Length (mm) | Die Length (inch) |
|--------------------|--|----|-------------|-----------------|-------------------|
| ESA3220NL56-10 | Die set n. 10 - length 56 mm | 10 | 10-12 | 56 | 2.205 |
| ESA3220NL56-12 | Die set n. 12 - length 56 mm | 12 | 12-15 | 56 | 2.205 |
| ESA3220NL56-15 | Die set n. 15 - length 56 mm | 15 | 15-18 | 56 | 2.205 |
| ESA3220NL56-18 | Die set n. 18 - length 56 mm | 18 | 18-21 | 56 | 2.205 |
| ESA3220NL56-21 | Die set n. 21 - length 56 mm | 21 | 21-24 | 56 | 2.205 |
| ESA3320N140-24 | Die set n. 24 - length 70 mm | 24 | 24-27 | 70 | 2.756 |
| ESA3320NL90-27 | Die set n. 27 - length 90 mm | 27 | 27-30 | 90 | 3.543 |
| ESA3320NL90-30 | Die set n. 30 - length 90 mm | 30 | 30-33 | 90 | 3.543 |
| ESA3320NL90-33 | Die set n. 33 - length 90 mm | 33 | 33-36 | 90 | 3.543 |
| ESA3320NL90-36 | Die set n. 36 - length 90 mm | 36 | 36-39 | 90 | 3.543 |
| ESA3320NL90-39 | Die set n. 39 - length 90 mm | 39 | 39-42 | 90 | 3.543 |
| ESA3320NL90-42 | Die set n. 42 - length 90 mm | 42 | 42-45 | 90 | 3.543 |
| ESA3320N100-45 | Die set n. 45 - length 100 mm | 45 | 45-48 | 100 | 3.937 |
| ESA3320NL100-48 | Die set n. 48 - length 100 mm | 48 | 48-51 | 100 | 3.937 |
| ESA3320N110-51 | Die set n. 51 - length 110 mm | 51 | 51-57 | 110 | 4.331 |
| ESA3320N110-57 | Die set n. 57 - length 110 mm | 57 | 57-62 | 110 | 4.331 |
| ESA3320N110-62 | Die set n. 62 - length 110 mm | 62 | 62-66 | 110 | 4.331 |
| ESA3330N125-66 | Die set n. 66 - length 110 mm | 66 | 66-70 | 110 | 4.331 |
| ESA3320N100-70 | Die set n. 70 - length 100 mm | 70 | 70-72 | 100 | 3.937 |
| ESA3330NL100D072L2 | Die set n. 72 - length 100 mm | 72 | 72-73 | 100 | 3.937 |
| ESA3540N125-73 | Die set n. 73 - length 125 mm | 73 | 73-76 | 125 | 4.921 |
| ESA3540N125-76A | Die set n. 76 - length 125 mm | 76 | 76-86 | 125 | 4.921 |
| ESA3540N125-86 | Die set n. 86 - length 125 mm | 86 | 86-90 | 125 | 4.921 |
| ESA3540N125-90 | Die set n. 90 - length 125 mm | 90 | 90-95 | 125 | 4.921 |
| ESA3540N12595 | Die set n. 95 - length 125 mm | 95 | 95-105 | 125 | 4.921 |
| ESA3330N340KT | Kit 13 dies MB350/L/MV350 (n.15 to n.73) | - | - | - | - |
| ESA3330N340KTF | Kit 20 dies MB350/L/MV350 (n.15 to n.76) | - | - | - | - |

Notes:

Refrigeration hose special dies available upon request

CRIMPING MACHINES

MV 137

FIELD SERVICE & MOBILE WORKSHOP

MOBILE VAN



KEY ADVANTAGES

- Robust and compact design
- Lightweight
- High crimping speed
- Suitable also for 90° elbow fittings
- Cylinder protection
- Remote head mounting option possible

MAIN APPLICATIONS

Designed for hydraulic maintenance specialists for on-site repairs with mobile vans. It is possible to install the crimp head separately from the power pack to gain space inside the vehicle and obtain a lower centre of gravity.

TECHNICAL SPECIFICATIONS

| | | | |
|----------------------|------------------------------------|---------------------------|---|
| Dimensions: | 650 x 550 x 610 mm (26 x 22 x 24") | Motor: | 2.0 kW |
| Net Weight: | 103 kg (227 lb) | Noise Level: | 72 dB A |
| Packaging: | 800 x 600 x 830 mm (31 x 24 x 33") | Crimp Range: | 4 - 70 mm (0.157 - 2.756") |
| Gross Weight: | 120 kg (265 lb) | Crimp Force: | 137 t |
| Voltages: | 12 V | Opening with Dies: | +28 mm (+1.102") |
| | 24 V | Complete Opening: | 100 mm (3.937") |
| Capacity: | 2wb: 1 1/4" max. | Master Die Length: | 75 mm (2.952") |
| | 4ws: 1 1/4" max. | Standard Dies: | 15, 18, 21, 24, 27, 30, 33, 36, 39, 42, 45, 48, 51 |

Technical Features:

Options available: Die storage, ergonomic gun, battery and charger, die sets for brake and air-conditioning hoses, marking dies

HOSE AND FITTING SELECTION

| Hose Type | Fittings Type | Max. Hose Size | Ref. Hoses |
|------------------------|---|----------------|---|
| 2 Wire Braid & Textile | MF2000 Multifit; MF3000 OPF; MF3000 OPK | 1 1/4" | Tractor; Harvester; Lyteflex; Pilot; Cover; Equator; Rockmaster (braided); Shieldmaster (braided); Astro; Multitex; Hydroplast; Spirtex/K |
| 4 Wire Spirals | MF2000 Multifit; MF3000 OPF; MF3000 OPK | 1 1/4" | Rockmaster (spiral); Shieldmaster (spiral); GoldenISO Xtraflex |
| 4 Wire Spirals | MF2000 Interlock Plus; MF2000 Xtralock | 3/4" | Rockmaster (spiral); Shieldmaster (spiral); GoldenISO Xtraflex |

CRIMPING MACHINES

MV 137

FIELD SERVICE & MOBILE WORKSHOP

MOBILE VAN

ORDERING INFORMATION

| Product Code | Description |
|---------------|-------------|
| EOA3251N12137 | MV 137 12V |
| EOA3252N24137 | MV 137 24V |

AVAILABLE DIE SETS

| Product Code | Description | N° | Crimp Range | Die Length (mm) | Die Length (inch) |
|-----------------|---|----|-------------|-----------------|-------------------|
| ESA3220NL56-6 | Die set n. 6 - length 56 mm | 6 | 06-08 | 56 | 2.205 |
| ESA3220NL56-8 | Die set n. 8 - length 56 mm | 8 | 08-10 | 56 | 2.205 |
| ESA3220NL56-10 | Die set n. 10 - length 56 mm | 10 | 10-12 | 56 | 2.205 |
| ESA3220NL56-12 | Die set n. 12 - length 56 mm | 12 | 12-15 | 56 | 2.205 |
| ESA3220NL56-15 | Die set n. 15 - length 56 mm | 15 | 15-18 | 56 | 2.205 |
| ESA3220NL56-17 | Die set n. 17 - length 56 mm | 17 | 17-18 | 56 | 2.205 |
| ESA3220NL56-18 | Die set n. 18 - length 56 mm | 18 | 18-21 | 56 | 2.205 |
| ESA3220NL56-20 | Die set n. 20 - length 56 mm | 20 | 20-21 | 56 | 2.205 |
| ESA3220NL56-21 | Die set n. 21 - length 56 mm | 21 | 21-24 | 56 | 2.205 |
| ESA3220N137-24 | Die set n. 24 - length 56 mm | 24 | 24-27 | 56 | 2.205 |
| ESA3220N137-27 | Die set n. 27 - length 56 mm | 27 | 27-30 | 56 | 2.205 |
| ESA3220N137-30 | Die set n. 30 - length 56 mm | 30 | 30-33 | 56 | 2.205 |
| ESA3220N137-33 | Die set n. 33 - length 70 mm | 33 | 33-36 | 70 | 2.756 |
| ESA3220N75-36 | Die set n. 36 - length 75 mm | 36 | 36-39 | 75 | 2.953 |
| ESA3220N137-39 | Die set n. 39 - length 70 mm | 39 | 39-42 | 70 | 2.756 |
| ESA3320N140-42 | Die set n. 42 - length 70 mm | 42 | 42-45 | 70 | 2.756 |
| ESA3220N137-45 | Die set n. 45 - length 70 mm | 45 | 45-48 | 70 | 2.756 |
| ESA3220N137-48 | Die set n. 48 - length 70 mm | 48 | 48-51 | 70 | 2.756 |
| ESA3220N137-51 | Die set n. 51 - length 75 mm | 51 | 51-57 | 75 | 2.953 |
| ESA3220N137KT | Kit 10 dies MB137/S/MV137(n.15 to n.48) | - | - | - | - |
| ESA3220N137KT9J | Kit 9 dies MB137/S/MV137 (n.15 to n.48) | - | - | - | - |
| ESA3220NKIT6J | Kit 6 dies MB137/S/MV137 (n.15 to n.39) | - | - | - | - |
| ESA3220N137KTF | Kit 13 dies MB137/S/MV137(n.15 to n.51) | - | - | - | - |

Notes:

Refrigeration hose special dies available upon request

CRIMPING MACHINES



MV 137 L

FIELD SERVICE & MOBILE WORKSHOP

MOBILE VAN

KEY ADVANTAGES

- Robust and compact design
- Lightweight
- High crimping speed
- Suitable also for 90° elbow fittings
- Cylinder protection

MAIN APPLICATIONS

Designed for hydraulic maintenance specialists for on-site repairs with mobile vans. It is possible to install the crimp head separately from the power pack to gain space inside the vehicle and obtain a lower centre of gravity. This machine is equipped with a cable remote control.

TECHNICAL SPECIFICATIONS

| | | | |
|----------------------|--------------------------------------|----------------------------|---|
| Dimensions: | 250 x 320 x 300 mm (10 x 13 x 12") | Crimp Range: | 4 - 70 mm (0.157 - 2.756") |
| Net Weight: | 86 kg (190 lb) | Crimp Force: | 137 t |
| Packaging: | 800 x 600 x 830 mm (31 x 24 x 33") | Opening with Dies: | +28 mm (+1.102") |
| Gross Weight: | 102 kg (225 lb) | Complete Opening: | 100 mm (3.937") |
| Voltages: | 12 V | Master Die Length: | 75 mm (2.952") |
| | 24 V | Standard Dies: | 15, 18, 21, 24, 27, 30, 33, 36, 39, 42, 45, 48, 51 |
| Capacity: | 2wb: 1 1/4" max. 4ws: 1 1/4" max. | Technical Features: | - Options available: Die storage, ergonomic gun, battery and charger, die sets for brake and air-conditioning hoses, marking dies - Dimensions of power pack: 440 x 320 x 320 mm (17 x 13 x 13") |
| Motor: | 2.0 kW | | |
| Noise Level: | 72 dB A | | |

HOSE AND FITTING SELECTION

| Hose Type | Fittings Type | Max. Hose Size | Ref. Hoses |
|------------------------|---|----------------|---|
| 2 Wire Braid & Textile | MF2000 Multifit; MF3000 OPF; MF3000 OPK | 1 1/4" | Tractor; Harvester; Lyteflex; Pilot; Cover; Equator; Rockmaster (braided); Shieldmaster (braided); Astro; Multitex; Hydroplast; Spirtex/K |
| 4 Wire Spirals | MF2000 Multifit; MF3000 OPF; MF3000 OPK | 1 1/4" | Rockmaster (spiral); Shieldmaster (spiral); GoldenISO Xtraflex |
| 4 Wire Spirals | MF2000 Interlock Plus; MF2000 Xtralock | 3/4" | Rockmaster (spiral); Shieldmaster (spiral); GoldenISO Xtraflex |

CRIMPING MACHINES

MV 137 L

FIELD SERVICE & MOBILE WORKSHOP

MOBILE VAN

ORDERING INFORMATION

| Product Code | Description |
|----------------|--------------|
| EOA3251NMV137L | MV 137 L 12V |
| EOA3252NMV137L | MV 137 L 24V |

AVAILABLE DIE SETS

| Product Code | Description | N° | Crimp Range | Die Length (mm) | Die Length (inch) |
|-----------------|--|----|-------------|-----------------|-------------------|
| ESA3220NL56-6 | Die set n. 6 - length 56 mm | 6 | 06-08 | 56 | 2.205 |
| ESA3220NL56-8 | Die set n. 8 - length 56 mm | 8 | 08-10 | 56 | 2.205 |
| ESA3220NL56-10 | Die set n. 10 - length 56 mm | 10 | 10-12 | 56 | 2.205 |
| ESA3220NL56-12 | Die set n. 12 - length 56 mm | 12 | 12-15 | 56 | 2.205 |
| ESA3220NL56-15 | Die set n. 15 - length 56 mm | 15 | 15-18 | 56 | 2.205 |
| ESA3220NL56-17 | Die set n. 17 - length 56 mm | 17 | 17-18 | 56 | 2.205 |
| ESA3220NL56-18 | Die set n. 18 - length 56 mm | 18 | 18-21 | 56 | 2.205 |
| ESA3220NL56-20 | Die set n. 20 - length 56 mm | 20 | 20-21 | 56 | 2.205 |
| ESA3220NL56-21 | Die set n. 21 - length 56 mm | 21 | 21-24 | 56 | 2.205 |
| ESA3220N137-24 | Die set n. 24 - length 56 mm | 24 | 24-27 | 56 | 2.205 |
| ESA3220N137-27 | Die set n. 27 - length 56 mm | 27 | 27-30 | 56 | 2.205 |
| ESA3220N137-30 | Die set n. 30 - length 56 mm | 30 | 30-33 | 56 | 2.205 |
| ESA3220N137-33 | Die set n. 33 - length 70 mm | 33 | 33-36 | 70 | 2.756 |
| ESA3220N75-36 | Die set n. 36 - length 75 mm | 36 | 36-39 | 75 | 2.953 |
| ESA3220N137-39 | Die set n. 39 - length 70 mm | 39 | 39-42 | 70 | 2.756 |
| ESA3320N140-42 | Die set n. 42 - length 70 mm | 42 | 42-45 | 70 | 2.756 |
| ESA3220N137-45 | Die set n. 45 - length 70 mm | 45 | 45-48 | 70 | 2.756 |
| ESA3220N137-48 | Die set n. 48 - length 70 mm | 48 | 48-51 | 70 | 2.756 |
| ESA3220N137-51 | Die set n. 51 - length 75 mm | 51 | 51-57 | 75 | 2.953 |
| ESA3220N137KT | Kit 10 dies MB137/S/MV137 (n.15 to n.48) | - | - | - | - |
| ESA3220N137KT9J | Kit 9 dies MB137/S/MV137 (n.15 to n.48) | - | - | - | - |
| ESA3220NKIT6J | Kit 6 dies MB137/S/MV137 (n.15 to n.39) | - | - | - | - |
| ESA3220N137KTF | Kit 13 dies MB137/S/MV137 (n.15 to n.51) | - | - | - | - |

Notes:

Refrigeration hose special dies available upon request

CRIMPING MACHINES

MV 240

FIELD SERVICE & MOBILE WORKSHOP

MOBILE VAN



KEY ADVANTAGES

- Robust design
- Ergonomic micrometer
- High crimping speed
- Radial movement of the dies
- Cylinder protection
- Remote head mounting option possible

MAIN APPLICATIONS

Designed for hydraulic maintenance specialists for on-site repairs with mobile vans. It is possible to install the crimp head separately from the power pack to gain space inside the vehicle and obtain a lower centre of gravity.

TECHNICAL SPECIFICATIONS

| | | | |
|----------------------|------------------------------------|---|-------------------------------------|
| Dimensions: | 650 x 550 x 670 mm (26 x 22 x 26") | Motor: | 2.0 kW |
| Net Weight: | 145 kg (320 lb) | Noise Level: | 72 dB A |
| Packaging: | 800 x 600 x 830 mm (31 x 24 x 33") | Crimp Range: | 4 - 76 mm (0.157 - 2.992") |
| Gross Weight: | 180 kg (397 lb) | Crimp Force: | 240 t |
| Voltages: | 12 V | Opening with Dies: | +38 mm (+1.496") |
| | 24 V | Complete Opening: | 118 mm (4.646") |
| | 220/240 V, 3Ph, 50 Hz | Master Die Length: | 100 mm (3.937") |
| | 380/415 V, 3Ph, 50 Hz | Standard Dies: | 15, 18, 21, 24, 27, 30, 33, 36, 39, |
| | 208/240 V, 3Ph, 60 Hz | | 42, 45, 48, 51, 57, 62, 66, 70, 72 |
| | 380/415 V, 3Ph, 60 Hz | Technical Features: | |
| Capacity: | 2ws: 2" max. | Options available: Die storage, ergonomic gun, battery and charger, die sets for brake and air-conditioning hoses, marking dies | |
| | 4ws: 2" max. | | |
| | 6ws: 1" max. | | |

HOSE AND FITTING SELECTION

| Hose Type | Fittings Type | Max. Hose Size | Ref. Hoses |
|------------------------|--|----------------|---|
| 2 Wire Braid & Textile | MF2000 Multifit; MF3000 OPF; MF3000 OPK | 2" | Tractor; Harvester; Lyteflex; Pilot; Cover; Equator; Rockmaster (braided); Shieldmaster (braided); Astro; Multitex; Hydroplast; Spirtex/K |
| 4 Wire Spirals | MF2000 Multifit; MF3000 OPF; MF3000 OPK | 2" | Rockmaster (spiral); Shieldmaster (spiral); GoldenISO Xtraflex |
| 4 Wire Spirals | MF2000 Interlock Plus; MF2000 Xtralock; MF2000 Spiralfit | 1¼" | Rockmaster (spiral); Shieldmaster (spiral); GoldenISO Xtraflex |
| 6 Wire Spirals | MF2000 Interlock Plus; MF2000 Xtralock | 1" | Diamondspir; Goldenblast/Six |

CRIMPING MACHINES

MV 240

FIELD SERVICE & MOBILE WORKSHOP

MOBILE VAN

ORDERING INFORMATION

| Product Code | Description |
|---------------|--------------------------|
| EOA3351N12240 | MV 240 12V |
| EOA3352N24240 | MV 240 24V |
| EOA3324NMV240 | MV 240 380/415V 3PH 50HZ |
| EOA3327NMV240 | MV 240 220/240V 3PH 50HZ |
| EOA3329NMV240 | MV 240 208/240V 3PH 60HZ |
| EOA332BNMV240 | MV 240 380/415V 3PH 60HZ |

AVAILABLE DIE SETS

| Product Code | Description | N° | Crimp Range | Die Length (mm) | Die Length (inch) |
|--------------------|--|----|-------------|-----------------|-------------------|
| ESA3220NL56-10 | Die set n. 10 - length 56 mm | 10 | 10-12 | 56 | 2.205 |
| ESA3220NL56-12 | Die set n. 12 - length 56 mm | 12 | 12-15 | 56 | 2.205 |
| ESA3220NL56-15 | Die set n. 15 - length 56 mm | 15 | 15-18 | 56 | 2.205 |
| ESA3220NL56-18 | Die set n. 18 - length 56 mm | 18 | 18-21 | 56 | 2.205 |
| ESA3220NL56-21 | Die set n. 21 - length 56 mm | 21 | 21-24 | 56 | 2.205 |
| ESA3320N140-24 | Die set n. 24 - length 70 mm | 24 | 24-27 | 70 | 2.756 |
| ESA3320NL90-27 | Die set n. 27 - length 90 mm | 27 | 27-30 | 90 | 3.543 |
| ESA3320NL90-30 | Die set n. 30 - length 90 mm | 30 | 30-33 | 90 | 3.543 |
| ESA3320NL90-33 | Die set n. 33 - length 90 mm | 33 | 33-36 | 90 | 3.543 |
| ESA3320NL90-36 | Die set n. 36 - length 90 mm | 36 | 36-39 | 90 | 3.543 |
| ESA3320NL90-39 | Die set n. 39 - length 90 mm | 39 | 39-42 | 90 | 3.543 |
| ESA3320NL90-42 | Die set n. 42 - length 90 mm | 42 | 42-45 | 90 | 3.543 |
| ESA3320N100-45 | Die set n. 45 - length 100 mm | 45 | 45-48 | 100 | 3.937 |
| ESA3320NL100-48 | Die set n. 48 - length 100 mm | 48 | 48-51 | 100 | 3.937 |
| ESA3320N100-51 | Die set n. 51 - length 100 mm | 51 | 51-57 | 100 | 3.937 |
| ESA3320N100-54 | Die set n. 54 - length 100 mm | 54 | 54-57 | 100 | 3.937 |
| ESA3320N100-57 | Die set n. 57 - length 100 mm | 57 | 57-62 | 100 | 3.937 |
| ESA3320N100-62 | Die set n. 62 - length 100 mm | 62 | 62-66 | 110 | 4.331 |
| ESA3320N100-66 | Die set n. 66 - length 100 mm | 66 | 66-70 | 100 | 3.937 |
| ESA3320N100-70 | Die set n. 70 - length 100 mm | 70 | 70-72 | 100 | 3.937 |
| ESA3330NL100D072L2 | Die set n. 72 - length 100 mm | 72 | 72-73 | 100 | 3.937 |
| ESA3320N240KT | Kit 12 dies MB240/MV240 (n.15 to n.66) | - | - | - | - |
| ESA3320N240KTF | Kit 18 dies MB240/MV240 (n.15 to n.72) | - | - | - | - |

Notes:

Refrigeration hose special dies available upon request

CRIMPING MACHINES

MV 240 L

FIELD SERVICE & MOBILE WORKSHOP

MOBILE VAN



KEY ADVANTAGES

- Robust design
- Ergonomic micrometer
- High crimping speed
- Radial movement of the dies
- Cylinder protection

MAIN APPLICATIONS

Designed for hydraulic maintenance specialists for on-site repairs with mobile vans. It is possible to install the crimp head separately from the power pack to gain space inside the vehicle and obtain a lower centre of gravity. This machine is equipped with a cable remote control.

TECHNICAL SPECIFICATIONS

| | | | |
|----------------------|--------------------------------------|---|-------------------------------------|
| Dimensions: | 320 x 360 x 350 mm (13 x 13.5 x 14") | Motor: | 2.0 kW |
| Net Weight: | 130 kg (287 lb) | Noise Level: | 72 dB A |
| Packaging: | 800 x 600 x 830 mm (31 x 24 x 33") | Crimp Range: | 4 - 76 mm (0.157 - 2.992") |
| Gross Weight: | 180 kg (397 lb) | Crimp Force: | 240 t |
| Voltages: | 12 V | Opening with Dies: | +38 mm (+1.496") |
| | 24 V | Complete Opening: | 118 mm (4.646") |
| | 220/240 V, 3Ph, 50 Hz | Master Die Length: | 100 mm (3.937") |
| | 380/415 V, 3Ph, 50 Hz | Standard Dies: | 15, 18, 21, 24, 27, 30, 33, 36, 39, |
| | 208/240 V, 3Ph, 60 Hz | | 42, 45, 48, 51, 57, 62, 66, 70, 72 |
| | 380/415 V, 3Ph, 60 Hz | Technical Features: | |
| Capacity: | 2wb: 2" max. | - Options available: Die storage, ergonomic gun, battery and charger, die sets for brake and air-conditioning hoses, marking dies | |
| | 4ws: 2" max. | - Dimensions of power pack: 440 x 320 x 320 mm (17 x 13 x 13") | |
| | 6ws: 1" max. | | |

HOSE AND FITTING SELECTION

| Hose Type | Fittings Type | Max. Hose Size | Ref. Hoses |
|------------------------|--|----------------|---|
| 2 Wire Braid & Textile | MF2000 Multifit; MF3000 OPF; MF3000 OPK | 2" | Tractor; Harvester; Lyteflex; Pilot; Cover; Equator; Rockmaster (braided); Shieldmaster (braided); Astro; Multitex; Hydroplast; Spirtex/K |
| 4 Wire Spirals | MF2000 Multifit; MF3000 OPF; MF3000 OPK | 2" | Rockmaster (spiral); Shieldmaster (spiral); GoldenISO Xtraflex |
| 4 Wire Spirals | MF2000 Interlock Plus; MF2000 Xtralock; MF2000 Spiralfit | 1 1/4" | Rockmaster (spiral); Shieldmaster (spiral); GoldenISO Xtraflex |
| 6 Wire Spirals | MF2000 Interlock Plus; MF2000 Xtralock | 1" | Diamondspir; Goldenblast/Six |

CRIMPING MACHINES

MV 240 L

FIELD SERVICE & MOBILE WORKSHOP

MOBILE VAN

ORDERING INFORMATION

| Product Code | Description |
|----------------|--------------|
| EOA3251NMV240L | MV 240 L 12V |

AVAILABLE DIE SETS

| Product Code | Description | N° | Crimp Range | Die Length (mm) | Die Length (inch) |
|--------------------|--|----|-------------|-----------------|-------------------|
| ESA3220NL56-10 | Die set n. 10 - length 56 mm | 10 | 10-12 | 56 | 2.205 |
| ESA3220NL56-12 | Die set n. 12 - length 56 mm | 12 | 12-15 | 56 | 2.205 |
| ESA3220NL56-15 | Die set n. 15 - length 56 mm | 15 | 15-18 | 56 | 2.205 |
| ESA3220NL56-18 | Die set n. 18 - length 56 mm | 18 | 18-21 | 56 | 2.205 |
| ESA3220NL56-21 | Die set n. 21 - length 56 mm | 21 | 21-24 | 56 | 2.205 |
| ESA3320N140-24 | Die set n. 24 - length 70 mm | 24 | 24-27 | 70 | 2.756 |
| ESA3320NL90-27 | Die set n. 27 - length 90 mm | 27 | 27-30 | 90 | 3.543 |
| ESA3320NL90-30 | Die set n. 30 - length 90 mm | 30 | 30-33 | 90 | 3.543 |
| ESA3320NL90-33 | Die set n. 33 - length 90 mm | 33 | 33-36 | 90 | 3.543 |
| ESA3320NL90-36 | Die set n. 36 - length 90 mm | 36 | 36-39 | 90 | 3.543 |
| ESA3320NL90-39 | Die set n. 39 - length 90 mm | 39 | 39-42 | 90 | 3.543 |
| ESA3320NL90-42 | Die set n. 42 - length 90 mm | 42 | 42-45 | 90 | 3.543 |
| ESA3320N100-45 | Die set n. 45 - length 100 mm | 45 | 45-48 | 100 | 3.937 |
| ESA3320NL100-48 | Die set n. 48 - length 100 mm | 48 | 48-51 | 100 | 3.937 |
| ESA3320N100-51 | Die set n. 51 - length 100 mm | 51 | 51-57 | 100 | 3.937 |
| ESA3320N100-54 | Die set n. 54 - length 100 mm | 54 | 54-57 | 100 | 3.937 |
| ESA3320N100-57 | Die set n. 57 - length 100 mm | 57 | 57-62 | 100 | 3.937 |
| ESA3320N100-62 | Die set n. 62 - length 100 mm | 62 | 62-66 | 110 | 4.331 |
| ESA3320N100-66 | Die set n. 66 - length 100 mm | 66 | 66-70 | 100 | 3.937 |
| ESA3320N100-70 | Die set n. 70 - length 100 mm | 70 | 70-72 | 100 | 3.937 |
| ESA3330NL100D072L2 | Die set n. 72 - length 100 mm | 72 | 72-73 | 100 | 3.937 |
| ESA3320N240KT | Kit 12 dies MB240/MV240 (n.15 to n.66) | - | - | - | - |
| ESA3320N240KTF | Kit 18 dies MB240/MV240 (n.15 to n.72) | - | - | - | - |

Notes:

Refrigeration hose special dies available upon request

CRIMPING MACHINES

MV 350

FIELD SERVICE & MOBILE / CONTAINER WORKSHOP

MOBILE VAN



KEY ADVANTAGES

- Robust design
- Large opening
- High crimping force
- Ergonomic micrometer
- High crimping speed
- Radial movement of the dies
- Cylinder protection
- Remote head mounting option possible

MAIN APPLICATIONS

Designed for hydraulic maintenance specialists for on-site repairs in mobile vans and an ideal solution for container shops. The high crimp force makes this machine a versatile solution for the whole hydraulic hose range. It is possible to install the crimp head separately from the power pack to gain space inside the vehicle and obtain a lower centre of gravity.

TECHNICAL SPECIFICATIONS

| | | | |
|----------------------|------------------------------------|---|---|
| Dimensions: | 650 x 550 x 750 mm (26 x 22 x 30") | Motor: | 2.0 kW |
| Net Weight: | 210 kg (463 lb) | Noise Level: | <65 dB A |
| Packaging: | 800 x 600 x 830 mm (31 x 24 x 33") | Crimp Range: | 4 - 130 mm (0.157 - 5.118") |
| Gross Weight: | 260 kg (573 lb) | Crimp Force: | 350 t |
| Voltages: | 12 V | Opening with Dies: | +54 mm (+2.125") |
| | 24 V | Complete Opening: | 180 mm (7.086") |
| | 220/240 V, 3Ph, 50 Hz | Master Die Length: | 115 mm (4.528") |
| | 380/415 V, 3Ph, 50 Hz | Standard Dies: | 15, 18, 21, 24, 27, 30, 33, 36, 39, 42, |
| | 208/240 V, 3Ph, 60 Hz | | 45, 48, 51, 57, 62, 66, 70, 72, 73, 76 |
| | 380/415 V, 3Ph, 60 Hz | Technical Features: | |
| Capacity: | 2wb: 3" max. | Options available: Die storage, ergonomic gun, battery and charger, die sets for brake and air-conditioning hoses, marking dies | |
| | 4ws: 2" max. | Safety Remarks: | |
| | 6ws: 2" max. | Possible limitations in case of double elbow fittings | |
| | Textile / Suction Hose: 4" | | |

HOSE AND FITTING SELECTION

| Hose Type | Fittings Type | Max. Hose Size | Ref. Hoses |
|------------------------|--|--------------------|---|
| 2 Wire Braid & Textile | MF2000 Multifit; MF3000 OPK; MF3000 OPF | 3" with extra dies | Tractor; Harvester; Lyteflex; Pilot; Cover; Equator; Rockmaster (braided); Shieldmaster (braided); Astro; Multitex; Hydroplast; Spirtex/K |
| 4 Wire Spirals | MF2000 Multifit; MF2000 Interlock Plus; MF2000 Spiralfit; MF3000 OPK; MF3000 OPF | 2" | Rockmaster (spiral); Shieldmaster (spiral); GoldenISO Xtraflex; Goldenblast |
| 6 Wire Spirals | MF2000 Interlock Plus; MF2000 Spiralfit | 2" | Rockmaster/13; GoldenISO/35 Xtraflex; Goldenblast/six |
| 6 Wire Spirals | MF2000 Interlock Plus; MF2000 Spiralfit; MF2000 Xtralock | 1½" | Diamondspir; Rockmaster/15; GoldenISO/42 Xtraflex; Shieldmaster/6000 |

CRIMPING MACHINES

MV 350

FIELD SERVICE & MOBILE / CONTAINER WORKSHOP

MOBILE VAN

ORDERING INFORMATION

| Product Code | Description |
|---------------|--------------------------|
| EOA3351N12350 | MV 350 12V 12V |
| EOA3352N24350 | MV 350 24V 24V |
| EOA3324NMV350 | MV 350 380/415V 3PH 50HZ |
| EOA3327NMV350 | MV 350 220/240V 3PH 50HZ |
| EOA3329NMV350 | MV 350 208/240V 3PH 60HZ |
| EOA332BNMV350 | MV 350 380/415V 3PH 60HZ |

AVAILABLE DIE SETS

| Product Code | Description | N° | Crimp Range | Die Length (mm) | Die Length (inch) |
|--------------------|--|----|-------------|-----------------|-------------------|
| ESA3220NL56-10 | Die set n. 10 - length 56 mm | 10 | 10-12 | 56 | 2.205 |
| ESA3220NL56-12 | Die set n. 12 - length 56 mm | 12 | 12-15 | 56 | 2.205 |
| ESA3220NL56-15 | Die set n. 15 - length 56 mm | 15 | 15-18 | 56 | 2.205 |
| ESA3220NL56-18 | Die set n. 18 - length 56 mm | 18 | 18-21 | 56 | 2.205 |
| ESA3220NL56-21 | Die set n. 21 - length 56 mm | 21 | 21-24 | 56 | 2.205 |
| ESA3320N140-24 | Die set n. 24 - length 70 mm | 24 | 24-27 | 70 | 2.756 |
| ESA3320NL90-27 | Die set n. 27 - length 90 mm | 27 | 27-30 | 90 | 3.543 |
| ESA3320NL90-30 | Die set n. 30 - length 90 mm | 30 | 30-33 | 90 | 3.543 |
| ESA3320NL90-33 | Die set n. 33 - length 90 mm | 33 | 33-36 | 90 | 3.543 |
| ESA3320NL90-36 | Die set n. 36 - length 90 mm | 36 | 36-39 | 90 | 3.543 |
| ESA3320NL90-39 | Die set n. 39 - length 90 mm | 39 | 39-42 | 90 | 3.543 |
| ESA3320NL90-42 | Die set n. 42 - length 90 mm | 42 | 42-45 | 90 | 3.543 |
| ESA3320N100-45 | Die set n. 45 - length 100 mm | 45 | 45-48 | 100 | 3.937 |
| ESA3320NL100-48 | Die set n. 48 - length 100 mm | 48 | 48-51 | 100 | 3.937 |
| ESA3320N110-51 | Die set n. 51 - length 110 mm | 51 | 51-57 | 110 | 4.331 |
| ESA3320N110-57 | Die set n. 57 - length 110 mm | 57 | 57-62 | 110 | 4.331 |
| ESA3320N110-62 | Die set n. 62 - length 110 mm | 62 | 62-66 | 110 | 4.331 |
| ESA3330N125-66 | Die set n. 66 - length 110 mm | 66 | 66-70 | 110 | 4.331 |
| ESA3320N100-70 | Die set n. 70 - length 100 mm | 70 | 70-72 | 100 | 3.937 |
| ESA3330NL100D072L2 | Die set n. 72 - length 100 mm | 72 | 72-73 | 100 | 3.937 |
| ESA3540N125-73 | Die set n. 73 - length 125 mm | 73 | 73-76 | 125 | 4.921 |
| ESA3540N125-76A | Die set n. 76 - length 125 mm | 76 | 76-86 | 125 | 4.921 |
| ESA3540N125-90 | Die set n. 90 - length 125 mm | 90 | 90-95 | 125 | 4.921 |
| ESA3540N12595 | Die set n. 95 - length 125 mm | 95 | 95-105 | 125 | 4.921 |
| ESA3330N340KT | Kit 13 dies MB350/L/MV350 (n.15 to n.73) | - | - | - | - |
| ESA3330N340KTF | Kit 20 dies MB350/L/MV350 (n.15 to n.76) | - | - | - | - |

Notes:

Refrigeration hose special dies available upon request

CRIMPING MACHINES

GOLDENCRIMP 450

ASSEMBLING FOR FIELD REPAIR

BENCHTOP CRIMP MACHINE



KEY ADVANTAGES

- High crimp force (450 tons)
- Large opening
- Wide family of dies for industrial hoses
- Long master dies
- Robust - designed for harsh environments
- Low noise level
- Easy die set-up with ergonomic gun
- Metallic guard for the set stop

MAIN APPLICATIONS

Dedicated to field repair assemblers operating in harsh environments (mines, construction areas, drilling rigs, etc.). Suitable for the whole hose range (small and large bore hoses). Designed to be extremely robust to resist aggressive environmental conditions (wiper seal, powder protection, grease connections for master dies, easy accessibility for maintenance and handling).

TECHNICAL SPECIFICATIONS

| | | | |
|--------------------|---------------------------------------|---------------------------|---|
| Dimensions: | 830 x 775 x 1450 mm (33 x 31 x 57") | Noise Level: | <65 dB A |
| Net Weight: | 720 kg (1587 lb) | Crimp Range: | 4 - 130 mm (0.157 - 5.118") |
| Packaging: | 1120 x 1020 x 1770 mm (44 x 40 x 70") | Crimp Force: | 450 t |
| Voltages: | 220/240 V, 3Ph, 50 Hz | Opening with Dies: | +70 mm (+2.755") |
| | 380/415 V, 3Ph, 50 Hz | Complete Opening: | 202 mm (7.950") |
| | 208/240 V, 3Ph, 60 Hz | Master Die Length: | 140 mm (5.512") |
| | 380/415 V, 3Ph, 60 Hz | Standard Dies: | 15, 18, 21, 24, 27, 30, 33, 36, 39, 42, 45, 48, 51, 57, 62, 66, 70, 72, 73, 76 |
| Capacity: | 6ws: 3" max. | Safety remarks: | Please consider hose-fitting-machine integration when crimping |
| | Industrial: 4" max. | | |
| | 6ws: 3" max. | | |
| Motor: | 5.5 kW | | |

HOSE AND FITTING SELECTION

| Hose Type | Fittings Type | Max. Hose Size | Ref. Hoses |
|--------------------------|---|----------------|---|
| 2 Wire Braid & Textile | MF2000 Multifit; MF3000 OPF; MF3000 OPK | 4" | Tractor; Harvester; Lyteflex; Pilot; Cover; Equator; Rockmaster (braided); Shieldmaster (braided); Astro; Multitex; Hydroplast; Spirtex/K |
| 4 Wire Spirals | MF2000 Multifit; MF2000 Interlock Plus; MF2000 Xtralock; MF2000 Spiralfit; MF3000 OPF; MF3000 OPK | 3" | Rockmaster (spiral); Shieldmaster (spiral); GoldenISO Xtraflex; Xtraflow/4WS; Goldenblast |
| 6 Wire Spirals | MF2000 Interlock Plus; MF2000 Xtralock; MF2000 Spiralfit | 3" | Diamondspir/21; Rockmaster/13; Rockmaster/15; Goldenblast/Six |
| Industrial Textile Hoses | | 4" | Spirtex/K; Others |



Performances measured on a 400 V, 3Ph, 50 Hz network

CRIMPING MACHINES

GOLDENCRIMP 450

ASSEMBLING FOR FIELD REPAIR

BENCHTOP CRIMP MACHINE

ORDERING INFORMATION

| Product Code | Description |
|-------------------|-----------------------------------|
| EOA3324NMSCRIG450 | GOLDENCRIMP/450 380/415V 3PH 50HZ |

AVAILABLE DIE SETS

| Product Code | Description | N° | Crimp Range | Die Length (mm) | Die Length (inch) |
|--------------------|--|-----|-------------|-----------------|-------------------|
| ESA3220NL56-10 | Die set n. 10 - length 56 mm | 10 | 10-12 | 56 | 2.205 |
| ESA3220NL56-12 | Die set n. 12 - length 56 mm | 12 | 12-15 | 56 | 2.205 |
| ESA3220NL56-15 | Die set n. 15 - length 56 mm | 15 | 15-18 | 56 | 2.205 |
| ESA3220NL56-18 | Die set n. 18 - length 56 mm | 18 | 18-21 | 56 | 2.205 |
| ESA3220NL56-21 | Die set n. 21 - length 56 mm | 21 | 21-24 | 56 | 2.205 |
| ESA3320N140-24 | Die set n. 24 - length 70 mm | 24 | 24-27 | 70 | 2.756 |
| ESA3320NL90-27 | Die set n. 27 - length 90 mm | 27 | 27-30 | 90 | 3.543 |
| ESA3320NL90-30 | Die set n. 30 - length 90 mm | 30 | 30-33 | 90 | 3.543 |
| ESA3320NL90-33 | Die set n. 33 - length 90 mm | 33 | 33-36 | 90 | 3.543 |
| ESA3320NL90-36 | Die set n. 36 - length 90 mm | 36 | 36-39 | 90 | 3.543 |
| ESA3320NL90-39 | Die set n. 39 - length 90 mm | 39 | 39-42 | 90 | 3.543 |
| ESA3320NL90-42 | Die set n. 42 - length 90 mm | 42 | 42-45 | 90 | 3.543 |
| ESA3320N100-45 | Die set n. 45 - length 100 mm | 45 | 45-48 | 100 | 3.937 |
| ESA3320NL100-48 | Die set n. 48 - length 100 mm | 48 | 48-51 | 100 | 3.937 |
| ESA3320N110-51 | Die set n. 51 - length 110 mm | 51 | 51-57 | 110 | 4.331 |
| ESA3320N110-57 | Die set n. 57 - length 110 mm | 57 | 57-62 | 110 | 4.331 |
| ESA3320N110-62 | Die set n. 62 - length 110 mm | 62 | 62-66 | 110 | 4.331 |
| ESA3330N125-66 | Die set n. 66 - length 110 mm | 66 | 66-70 | 110 | 4.331 |
| ESA3320N100-70 | Die set n. 70 - length 100 mm | 70 | 70-72 | 100 | 3.937 |
| ESA3330NL100D072L2 | Die set n. 72 - length 100 mm | 72 | 72-73 | 100 | 3.937 |
| ESA3330NL125D073L4 | Die set n. 73 - length 125-28 mm, Reinforced pin | 73 | 73-76 | 125 | 4.921 |
| ESA3540N125-76 | Die set n. 76 - length 125 mm | 76 | 76-86 | 125 | 4.921 |
| ESA3540NL150D086L6 | Die set n. 86 - length 150 mm | 86 | 86-90 | 150 | 5.906 |
| ESA3540N125-90F | Die set n. 90 - length 125 mm | 90 | 90-95 | 125 | 4.921 |
| ESA3440NL150D095L6 | Die set n. 95 - length 150 mm | 95 | 95-105 | 150 | 5.906 |
| ESA3550NL150D105L | Die set n. 105 - length 150 mm | 105 | 105-112 | 150 | 5.906 |
| ESA3550NL150D112L | Die set n. 112 - length 150 mm | 112 | 112-122 | 150 | 5.906 |
| ESA3440NL130D122L5 | Die set n. 122 - length 130 mm REINF PIN | 122 | 122-130 | 130 | 5.118 |
| ESA3330N450KT | Kit 13 die set GC 450 (15 to 73) | - | - | - | - |
| ESA3330N450KTF | Kit 20 die set GC4 50 (15 to 76) | - | - | - | - |

CRIMPING MACHINES

MVB 140

MAINTENANCE WORKSHOP

VERTICAL BENCHTOP, CAGE DIES



KEY ADVANTAGES

- Easy use and maintenance
- Easy intuitive adjustment of crimp diameter
- Micrometer set-up with automatic stop
- Retractable pusher for easy insertion of the dies
- 'Plug & play' system (power pack already integrated)
- Wide clearance for tooling installation and fitting positioning
- Easy positioning of the spacer plates

MAIN APPLICATIONS

Dedicated to hydraulic maintenance shops and on-site repairs (construction machines, public works equipment, handling and lifting equipment, agriculture machines, etc.). Designed to crimp small size hoses up to 1 1/4" 4 wire spiral hose (with the exception of double skive type fittings). It can be used for small series productions due to its precise crimp operations and high durability.

TECHNICAL SPECIFICATIONS

| | | | |
|----------------------|--|-----------------------|--------------------------------|
| Dimensions: | 690 x 280 x 550 mm (48 x 19.5 x 38.5") | Motor: | 0.8 kW |
| Net Weight: | 86 kg (190 lb) | Noise Level: | <86 dB A |
| Gross Weight: | 110 kg (243 lb) | Crimp Range: | 11.5 to 55 mm (0.453 - 2.165") |
| Voltages: | 110 V, 1Ph, 60 Hz | Crimp Force: | 140 t |
| Capacity: | 2wb: 1 1/4" max. 4ws: 1 1/4" max. | Standard Dies: | 20, 30, 40, 50, 80, S1 |

Technical Features:

- Spacer plates supplied as standard: size 0 (positive crimping set by dedicated spacers)
- Professional approach with set stop and remote control drive allows easy crimping both in the field and in-shop assembling
- Possible limitations if used with double-elbow fittings
- Not suitable for hoses with double skive fittings (Interlock Plus, Xtralock)

HOSE AND FITTING SELECTION

| Hose Type | Fittings Type | Max. Hose Size | Ref. Hoses |
|------------------------|---|----------------|---|
| 2 Wire Braid & Textile | MF2000 Multifit; MF3000 OPK; MF3000 OPF | 1 1/4 | Tractor; Harvester; Lyteflex; Pilot; Cover; Equator; Rockmaster (braided); Shieldmaster (braided); Astro; Multitex; Hydroplast; Spirtex/K |
| 4 Wire Spirals | MF2000 Multifit; MF3000 OPK; MF3000 OPF | 1 1/4 | Rockmaster (spiral); Shieldmaster (spiral); GoldenISO Xtraflex |

CRIMPING MACHINES

MVB 140

MAINTENANCE WORKSHOP

VERTICAL BENCHTOP, CAGE DIES

ORDERING INFORMATION

| Product Code | Description |
|------------------|---|
| EOA3225NMVB140 | MVB 140 110V 1PH 60HZ |
| EOA3225SMVB140 | MVB 140 110V 60Hz (STD. DIES INCLUDED) |
| EOA3225SMVB140S1 | MVB 140 110V 60Hz (w 30,40,50,80,S1 DIES) |

AVAILABLE DIE SETS

| Product Code | Description | N° | Crimp Range | Die Length (mm) | Die Length (inch) |
|-------------------|-------------------------------|----|-------------|-----------------|-------------------|
| ESA3210NSUD-10 | DIES SET USA market 10 | - | 11,5-13,9 | 45 | 1.772 |
| ESA3210NSUD-20 | DIES SET USA market 20 | - | 14,0-15,9 | 45 | 1.772 |
| ESA3210NSUD-30 | DIES SET USA market 30 | - | 16,0-18,9 | 45 | 1.772 |
| ESA3210NSUD-40 | DIES SET USA market 40 | - | 19,0-21,9 | 45 | 1.772 |
| ESA3210NSUD-50 | DIES SET USA market 50 | - | 22,0-23,9 | 45 | 1.772 |
| ESA3210NSUD-60 | DIES SET USA market 60 | - | 24,0-26,9 | 57 | 2.244 |
| ESA3210NSUD-70 | DIES SET USA market 70 | - | 27,0-29,9 | 57 | 2.244 |
| ESA3210NSUD-80 | DIES SET USA market 80 | - | 30,0-33,9 | 57 | 2.244 |
| ESA3210NSUD-90 | DIES SET USA market 90 | - | 34,0-36,9 | 57 | 2.244 |
| ESA3210NSUD-S1 | DIES SET USA market S1 | - | 37,0-40,9 | 70 | 2.756 |
| ESA3210NSUD-S2 | DIES SET USA market S2 | - | 41,0-45,9 | 70 | 2.756 |
| ESA3210NSUD-S3 | DIES SET USA market S3 | - | 46,0-48,9 | 70 | 2.756 |
| ESA3210NSUD-S4 | DIES SET USA market S4 | - | 49,0-55,0 | 70 | 2.756 |
| ESA3320NTKIT5JB | DIE SET 5J MVB140 | - | - | - | - |
| ESA3330NTKIT3J | KIT 3 DIE SETS 5/8-3/4 MVB140 | - | - | - | - |
| ESA3330NTKIT5JOPT | KIT 5 DIE SETS OPTION MVB140 | - | - | - | - |

Notes:

Crimp head weight: 46 kg (101 lb)

Retraction of the cylinder and consequent crimp stroke start position is governed by the remote control crimp switch, to enable quicker crimping and increased productivity

CRIMPING MACHINES



MS 140

**ASSEMBLING FOR MASS PRODUCTION
STAND TYPE CRIMP MACHINE, SCS CONTROL**

KEY ADVANTAGES

- The quickest machine of the MS machine series
- Safe Crimp System (SCS) control
- Large production capacity (small/medium bore)
- Low noise level
- Precise
- Robust
- Easy die set-up with ergonomic gun

MAIN APPLICATIONS

Dedicated to professional assemblers for mass production of small/medium bore hoses, OEM assembly shops and large maintenance activities. Ideal when high production speeds are required.

TECHNICAL SPECIFICATIONS

| | | | |
|--------------------|---------------------------------------|----------------------------|--|
| Dimensions: | 890 x 810 x 1390 mm (35 x 32 x 55") | Motor: | 5.5 kW |
| Net Weight: | 675 kg (1488 lb) | Noise Level: | <69 dB A |
| Packaging: | 1120 x 1020 x 1770 mm (44 x 40 x 70") | Crimp Range: | 4 - 70 mm (0.157 - 2.756") |
| Voltages: | 220/240 V, 3Ph, 50 Hz | Crimp Force: | 140 t |
| | 380/415 V, 3Ph, 50 Hz | Opening with Dies: | +45 mm (+1.772") |
| | 208/240 V, 3Ph, 60 Hz | Complete Opening: | 125 mm (4.921") |
| Capacity: | 2wb: 1 1/4" max. | Master Die Length: | 80 mm (3.150") |
| | 4ws: 1 1/4" max. | Standard Dies: | 15, 18, 21, 24, 27, 30, 33, 36, 39, 42, 45, 48 |
| | | Technical Features: | Options available: Die sets for brake and air-conditioning hoses, marking dies |

HOSE AND FITTING SELECTION

| Hose Type | Fittings Type | Max. Hose Size | Ref. Hoses |
|------------------------|--|----------------|---|
| 2 Wire Braid & Textile | MF2000 Multifit; MF3000 OPK; MF3000 OPF | 1 1/4" | Tractor; Harvester; Lyteflex; Pilot; Cover; Equator; Rockmaster (braided); Shieldmaster (braided); Astro; Multitex; Hydroplast; Spirtex/K |
| 4 Wire Spirals | MF2000 Multifit; MF3000 OPK | 1 1/4" | Rockmaster (spiral); Shieldmaster (spiral); GoldenISO Xtraflex |
| 4 Wire Spirals | MF2000 Interlock Plus; MF2000 Xtralock; MF2000 Spiralfit | 1" | Rockmaster (spiral); Shieldmaster (spiral); GoldenISO Xtraflex; GoldenBlast |



Performances measured on a 400 V, 3Ph, 50 Hz network

CRIMPING MACHINES

MS 140

ASSEMBLING FOR MASS PRODUCTION

STAND TYPE CRIMP MACHINE, SCS CONTROL

ORDERING INFORMATION

| Product Code | Description |
|---------------|------------------------------|
| EOA3434NSC140 | MS 140 SCS 380/415V 3PH 50HZ |
| EOA3437NSC140 | MS 140 SCS 220/240V 3PH 50HZ |
| EOA3439NSC140 | MS 140 SCS 208/240V 3PH 60HZ |

AVAILABLE DIE SETS

| Product Code | Description | N° | Crimp Range | Die Length (mm) | Die Length (inch) |
|----------------|----------------------------------|----|-------------|-----------------|-------------------|
| ESA3220NL56-10 | Die set n. 10 - length 56 mm | 10 | 10-12 | 56 | 2.205 |
| ESA3320N140-12 | Die set n. 12 - length 70 mm | 12 | 12-15 | 70 | 2.756 |
| ESA3320N140-15 | Die set n. 15 - length 70 mm | 15 | 15-18 | 70 | 2.756 |
| ESA3320N140-18 | Die set n. 18 - length 70 mm | 18 | 18-21 | 70 | 2.756 |
| ESA3320N140-21 | Die set n. 21 - length 70 mm | 21 | 21-24 | 70 | 2.756 |
| ESA3320N140-24 | Die set n. 24 - length 70 mm | 24 | 24-27 | 70 | 2.756 |
| ESA3320N140-27 | Die set n. 27 - length 70 mm | 27 | 27-30 | 70 | 2.756 |
| ESA3320N140-30 | Die set n. 30 - length 70 mm | 30 | 30-33 | 70 | 2.756 |
| ESA3220N137-33 | Die set n. 33 - length 70 mm | 33 | 33-36 | 70 | 2.756 |
| ESA3220N75-36 | Die set n. 36 - length 75 mm | 36 | 36-39 | 75 | 2.953 |
| ESA3220N137-39 | Die set n. 39 - length 70 mm | 39 | 39-42 | 70 | 2.756 |
| ESA3320N140-42 | Die set n. 42 - length 70 mm | 42 | 42-45 | 70 | 2.756 |
| ESA3220N137-45 | Die set n. 45 - length 70 mm | 45 | 45-48 | 70 | 2.756 |
| ESA3220N137-48 | Die set n. 48 - length 70 mm | 48 | 48-51 | 70 | 2.756 |
| ESA3220N137-51 | Die set n. 51 - length 75 mm | 51 | 51-57 | 75 | 2.953 |
| ESA3540N140KT | Kit 10 dies MS140 (n.15 to n.48) | | | | |
| ESA3540N140KTF | Kit 12 dies MS140 (n.15 to n.48) | | | | |

Notes:

Refrigeration hose special dies available upon request

CRIMPING MACHINES

MS 280 L

**ASSEMBLING FOR MASS PRODUCTION
STAND TYPE CRIMP MACHINE, SCS CONTROL**



KEY ADVANTAGES

- Robust structure for tough working environments
- First OEM machine up to 1 1/4"
- Safe Crimp System (SCS) integrated function
- Separate power pack
- Low noise
- Fast and ergonomic
- Low maintenance
- Easy die set-up with ergonomic gun

MAIN APPLICATIONS

Dedicated to professional maintenance shops and small OEM workshops. Versatile crimp machine for the whole hose range up to 2" size 4 wire spiral included. The optimum choice for professional assemblers that require high precision and quality control with SCS (Safe Crimp System) for small/medium OEM activities.

TECHNICAL SPECIFICATIONS

| | | | |
|----------------------|-------------------------------------|----------------------------|--|
| Net Weight: | 450 kg (992 lb) | Motor: | 5.5 kW |
| Packaging: | 850 x 850 x 1300 mm (34 x 34 x 51") | Noise Level: | <65 dB A |
| Gross Weight: | 500 kg (1102 lb) | Crimp Range: | 4 - 130 mm (0.157 - 5.118") |
| Voltages: | 220/240 V, 3Ph, 50 Hz | Crimp Force: | 280 t |
| | 380/415 V, 3Ph, 50 Hz | Opening with Dies: | +54 mm (+2.126") |
| | 208/240 V, 3Ph, 60 Hz | Complete Opening: | 180 mm (7.087") |
| | 380/415 V, 3Ph, 60 Hz | Master Die Length: | 115 mm (4.528") |
| Capacity: | 2wb: 3" max. | Standard Dies: | 15, 18, 21, 24, 27, 30, 33, 36, 39, 42, 45, 48, 51, 57, 62, 66, 70, 72 |
| | 4ws: 2" max. | Technical Features: | Net weight includes the separate power pack: 180 kg (396 lb); dimensions 1000 x 700 x 870 mm (39 x 27.5 x 34") |

Safety Remarks:

Please consider hose-fitting-machine integration when crimping

HOSE AND FITTING SELECTION

| Hose Type | Fittings Type | Max. Hose Size | Ref. Hoses |
|--------------------------|---|----------------|--|
| 2 Wire Braid & Textile | MF2000 Multifit | 2" | Tractor; Lyteflex; Pilot; Cover; Equator; Rockmaster (braided); Shieldmaster (braided); Astro; Multitex; Hydroplast; Spirtex/K |
| 4 Wire Spirals | MF2000 Multifit; MF2000 Interlock Plus; MF2000 Xtralock; MF2000 Spiralfit | 2" | Rockmaster (spiral); Shieldmaster (spiral); GoldenISO Xtraflex; Goldenblast |
| Industrial Textile Hoses | Various | 2" | Spirtex/K; Others |



Performances measured on a 400 V, 3Ph, 50 Hz network

CRIMPING MACHINES

MS 280 L

ASSEMBLING FOR MASS PRODUCTION

STAND TYPE CRIMP MACHINE, SCS CONTROL

ORDERING INFORMATION

| Product Code | Description |
|----------------|----------------------------|
| EOA3434NMS280L | MS 280 L 380/415V 3PH 50HZ |
| EOA3437NMS280L | MS 280 L 220/240V 3PH 50HZ |
| EOA3439NMS280L | MS 280 L 208/240V 3PH 60HZ |
| EOA343BNMS280L | MS 280 L 380/415V 3PH 60HZ |

AVAILABLE DIE SETS

| Product Code | Description | N° | Crimp Range | Die Length (mm) | Die Length (inch) |
|--------------------|--|----|-------------|-----------------|-------------------|
| ESA3220NL56-10 | Die set n. 10 - length 56 mm | 10 | 10-12 | 56 | 2.205 |
| ESA3220NL56-12 | Die set n. 12 - length 56 mm | 12 | 12-15 | 56 | 2.205 |
| ESA3220NL56-15 | Die set n. 15 - length 56 mm | 15 | 15-18 | 56 | 2.205 |
| ESA3220NL56-18 | Die set n. 18 - length 56 mm | 18 | 18-21 | 56 | 2.205 |
| ESA3220NL56-21 | Die set n. 21 - length 56 mm | 21 | 21-24 | 56 | 2.205 |
| ESA3320N140-24 | Die set n. 24 - length 70 mm | 24 | 24-27 | 70 | 2.756 |
| ESA3320NL90-27 | Die set n. 27 - length 90 mm | 27 | 27-30 | 90 | 3.543 |
| ESA3320NL90-30 | Die set n. 30 - length 90 mm | 30 | 30-33 | 90 | 3.543 |
| ESA3320NL90-33 | Die set n. 33 - length 90 mm | 33 | 33-36 | 90 | 3.543 |
| ESA3320NL90-36 | Die set n. 36 - length 90 mm | 36 | 36-39 | 90 | 3.543 |
| ESA3320NL90-39 | Die set n. 39 - length 90 mm | 39 | 39-42 | 90 | 3.543 |
| ESA3320NL90-42 | Die set n. 42 - length 90 mm | 42 | 42-45 | 90 | 3.543 |
| ESA3320N100-45 | Die set n. 45 - length 100 mm | 45 | 45-48 | 100 | 3.937 |
| ESA3320NL100-48 | Die set n. 48 - length 100 mm | 48 | 48-51 | 100 | 3.937 |
| ESA3320N100-51 | Die set n. 51 - length 100 mm | 51 | 51-57 | 100 | 3.937 |
| ESA3320N100-57 | Die set n. 57 - length 100 mm | 57 | 57-62 | 110 | 3.937 |
| ESA3320N110-62 | Die set n. 62 - length 110 mm | 62 | 62-66 | 110 | 4.331 |
| ESA3330N100-66 | Die set n. 66 - length 100 mm | 66 | 66-70 | 100 | 3.937 |
| ESA3320N100-70 | Die set n. 70 - length 100 mm | 70 | 70-72 | 100 | 3.937 |
| ESA3330NL100D072L2 | Die set n. 72 - length 100 mm | 72 | 72-73 | 100 | 3.937 |
| ESA3320N240KTF | Kit 18 dies MB240/MV240 (n.15 to n.72) | - | - | - | - |

CRIMPING MACHINES

MS 320

**ASSEMBLING FOR MASS PRODUCTION
STAND TYPE CRIMP MACHINE, SCS CONTROL**



KEY ADVANTAGES

- High crimp force
- Large opening
- Safe Crimp System (SCS) control
- Wide family of dies for industrial hoses
- Robust structure
- Fast and ergonomic
- Low noise level
- Easy die-set up with ergonomic gun

MAIN APPLICATIONS

Dedicated to professional assemblers for mass production, OEM assembly shops and large maintenance activities.

TECHNICAL SPECIFICATIONS

| | | | |
|----------------------|---------------------------------------|----------------------------|---|
| Dimensions: | 1240 x 995 x 1615 mm (49 x 39 x 64") | Motor: | 5.5 kW |
| Net Weight: | 1900 kg (4189 lb) | Noise Level: | <65 dB A |
| Packaging: | 1400 x 1100 x 1960 mm (55 x 43 x 77") | Crimp Range: | 4 - 130 mm (0.157 - 5.118") |
| Gross Weight: | 2230 kg (4916 lb) | Crimp Force: | 320 t |
| Voltages: | 220/240 V, 3Ph, 50 Hz | Opening with Dies: | +80 mm (+3.149") |
| | 380/415 V, 3Ph, 50 Hz | Complete Opening: | 207 mm (8.149") |
| | 208/240 V, 3Ph, 60 Hz | Master Die Length: | 100 mm (3.937") |
| | 380/415 V, 3Ph, 60 Hz | Standard Dies: | 15, 18, 21, 24, 27, 30, 33, 36, 39, 42, 45, 48, 51, 57, 62, 66, 70, 72, 73, 76 |
| Capacity: | 2wb: 3" max. | Technical Features: | Options available: Die sets for brake and air-conditioning hoses, marking dies |
| | 4ws: 2" max. | Safety Features: | Please consider hose-fitting-machine integration when crimping |
| | 6ws: 2" max. | | |
| | Textile & Suction Hose: 4" max. | | |

HOSE AND FITTING SELECTION

| Hose Type | Fittings Type | Max. Hose Size | Ref. Hoses |
|------------------------|---|--------------------|---|
| 2 Wire Braid & Textile | MF2000 Multifit | 3" with extra dies | Tractor; Harvester; Lyteflex; Pilot; Cover; Equator; Rockmaster (braided); Shieldmaster (braided); Astro; Multitex; Hydroplast; Spirtex/K |
| 4 Wire Spirals | MF2000 Multifit; MF2000 Interlock Plus; MF2000 Xtralock | 2" | Rockmaster (spiral); Shieldmaster (spiral); GoldenISO Xtraflex; Goldenblast/six |
| 6 Wire Spirals | MF2000 Interlock Plus | 2" | Rockmaster/13 |
| 6 Wire Spirals | MF2000 Spiralfit; MF2000 Xtralock | 2" | Shieldmaster/6000; Diamondspir; Goldenblast/six; GoldenISO Xtraflex |



Performances measured on a 400 V, 3Ph, 50 Hz network

CRIMPING MACHINES

MS 320

ASSEMBLING FOR MASS PRODUCTION

STAND TYPE CRIMP MACHINE, SCS CONTROL

ORDERING INFORMATION

| Product Code | Description |
|---------------|------------------------------|
| EOA3434NSC320 | MS 320 SCS 380/415V 3PH 50HZ |
| EOA3437NSC320 | MS 320 SCS 220/240V 3PH 50HZ |
| EOA3439NSC320 | MS 320 SCS 208/240V 3PH 60HZ |
| EOA343BNSC320 | MS 320 SCS 380/415V 3PH 60HZ |

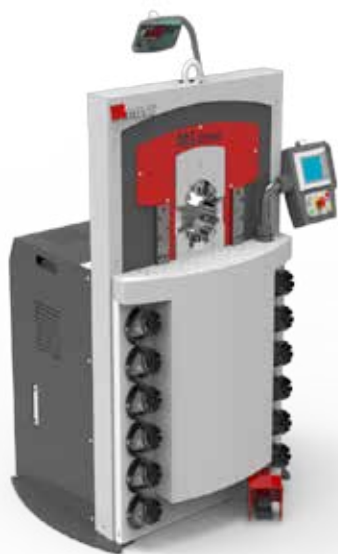
AVAILABLE DIE SETS

| Product Code | Description | N° | Crimp Range | Die Length (mm) | Die Length (inch) |
|--------------------|---|----|-------------|-----------------|-------------------|
| ESA3430NL90-10 | Die set n. 10 - length 90 mm | 10 | 10-12 | 90 | 3.543 |
| ESA3430NL90-12 | Die set n. 12 - length 90 mm | 12 | 12-15 | 90 | 3.543 |
| ESA3430NL90-15 | Die set n. 15 - length 90 mm | 15 | 15-18 | 90 | 3.543 |
| ESA3430NL90-18 | Die set n. 18 - length 90 mm | 18 | 18-21 | 90 | 3.543 |
| ESA3430NL90-21 | Die set n. 21 - length 90 mm | 21 | 21-24 | 90 | 3.543 |
| ESA3320NL90-24 | Die set n. 24 - length 90 mm | 24 | 24-27 | 90 | 3.543 |
| ESA3320NL90-27 | Die set n. 27 - length 90 mm | 27 | 27-30 | 90 | 3.543 |
| ESA3320NL90-30 | Die set n. 30 - length 90 mm | 30 | 30-33 | 90 | 3.543 |
| ESA3320NL90-33 | Die set n. 33 - length 90 mm | 33 | 33-36 | 90 | 3.543 |
| ESA3320NL90-36 | Die set n. 36 - length 90 mm | 36 | 36-39 | 90 | 3.543 |
| ESA3320NL90-39 | Die set n. 39 - length 90 mm | 39 | 39-42 | 90 | 3.543 |
| ESA3320NL90-42 | Die set n. 42 - length 90 mm | 42 | 42-45 | 90 | 3.543 |
| ESA3430N100-45 | Die set n. 45 - length 95 mm | 45 | 45-48 | 95 | 3.740 |
| ESA3320NL100-48 | Die set n. 48 - length 100 mm | 48 | 48-51 | 100 | 3.937 |
| ESA3430N110-51 | Die set n. 51 - length 110 mm | 51 | 51-57 | 110 | 4.331 |
| ESA3430N110-57 | Die set n. 57 - length 110 mm | 57 | 57-62 | 110 | 4.331 |
| ESA3320N110-62 | Die set n. 62 - length 110 mm | 62 | 62-66 | 110 | 4.331 |
| ESA3430N110-66 | Die set n. 66 - length 110 mm | 66 | 66-70 | 110 | 4.331 |
| ESA3320N100-70 | Die set n. 70 - length 100 mm | 70 | 70-72 | 100 | 3.937 |
| ESA3330NL100D072L2 | Die set n. 72 - length 100 mm | 72 | 72-73 | 100 | 3.937 |
| ESA3340NL120D073L8 | Die set n. 73 - length 120 mm | 73 | 73-76 | 120 | 4.724 |
| ESA3340NL120D076L8 | Die set n. 76 - length 120 mm | 76 | 76-86 | 120 | 4.724 |
| ESA3340NL100D086L6 | Die set n. 86 - length 100-65 mm | 86 | 86-90 | 100 | 3.937 |
| ESA3430NL100D090L6 | Die set n. 90 - length 100 mm, Reinforced Pin | 90 | 90-95 | 100 | 3.937 |
| ESA3430NL100D095L6 | Die set n. 95 - length 100 mm, Reinforced Pin | 95 | 95-105 | 100 | 3.937 |
| ESA3540N320KT | Kit 13 dies MS320 (n.15 to n.73) | | | | |
| ESA3540N320KTF | Kit 20 dies MS320 (n.15 to n.76) | | | | |

CRIMPING MACHINES

MS 480

**ASSEMBLING FOR MASS PRODUCTION
STAND TYPE CRIMP MACHINE, SCS CONTROL**



KEY ADVANTAGES

- High crimp force
- Large opening
- Safe Crimp System (SCS) control
- Wide family of dies for industrial hoses
- Long master dies
- Robust
- Low noise level
- Easy die set-up with ergonomic gun

MAIN APPLICATIONS

Dedicated to professional assemblers, large OEM suppliers and special applications. This machine is particularly suited to medium and large bore hose assembly operations.

TECHNICAL SPECIFICATIONS

| | | | |
|----------------------|---------------------------------------|----------------------------|---|
| Dimensions: | 1300 x 900 x 1700 mm (51 x 35 x 67") | Motor: | 5.5 kW |
| Net Weight: | 2200 kg (4850 lb) | Noise Level: | <65 dB A |
| Packaging: | 1400 x 1100 x 1960 mm (55 x 43 x 77") | Crimp Range: | 4 - 160 mm (0.157 - 6.299") |
| Gross Weight: | 2230 kg (4916 lb) | Crimp Force: | 480 t |
| Voltages: | 220/240 V, 3Ph, 50 Hz | Opening with Dies: | +85 mm (+3.346") |
| | 380/415 V, 3Ph, 50 Hz | Complete Opening: | 212 mm (8.346") |
| | 208/240 V, 3Ph, 60 Hz | Master Die Length: | 125 mm (4.921") |
| | 380/415 V, 3Ph, 60 Hz | Standard Dies: | 15, 18, 21, 24, 27, 30, 33, 36, 39, 42, 45, 48, 51, 57, 62, 66, 70, 72, 73, 76 |
| Capacity: | 6ws: 3" max. | Technical Features: | Options available: Die sets for brake and air-conditioning hoses, marking dies |
| | 8ws: 3" max. | Safety Remarks: | Please consider hose-fitting-machine integration when crimping |
| | Industrial Textile Hoses: 4" max. | | |

HOSE AND FITTING SELECTION

| Hose Type | Fittings Type | Max. Hose Size | Ref. Hoses |
|--------------------------|---|----------------|--|
| 2 Wire Braid & Textile | MF2000 Multifit | 3½" | Harvester; Lyteflex; Pilot; Cover; Equator; Rockmaster (braided); Shieldmaster (braided); Astro; Multitex; Hydroplast; Spirtex/K |
| 4 Wire Spirals | MF2000 Multifit; MF2000 Interlock Plus; MF2000 Xtralock; MF2000 Spiralfit | 4" | Rockmaster (spiral); Shieldmaster (spiral); GoldenISO Xtraflex; Xtraflow/4WS; Goldenblast |
| 6 Wire Spirals | MF2000 Interlock Plus; MF2000 Xtralock; MF2000 Spiralfit | 3" | Diamondspir/21; Rockmaster/13; Rockmaster/15; Goldenblast/six |
| Industrial Textile Hoses | | 4" | Spirtex/K; Others |



Performances measured on a 400 V, 3Ph, 50 Hz network

CRIMPING MACHINES

MS 480

ASSEMBLING FOR MASS PRODUCTION

STAND TYPE CRIMP MACHINE, SCS CONTROL

ORDERING INFORMATION

| Product Code | Description |
|---------------|-------------------------------|
| EOA3544NSC480 | MS 480 SCS 380/415V 3Ph 50 Hz |
| EOA3547NSC480 | MS 480 SCS 220/240V 3Ph 50 Hz |
| EOA3549NSC480 | MS 480 SCS 208/240V 3Ph 60 Hz |
| EOA354BNSC480 | MS 480 SCS 380/415V 3Ph 60 Hz |

AVAILABLE DIE SETS

| Product Code | Description | N° | Crimp Range | Die Length (mm) | Die Length (inch) |
|--------------------|--|-----|-------------|-----------------|-------------------|
| ESA3430NL90-10 | Die set n. 10 - length 90 mm | 10 | 10-12 | 90 | 3.543 |
| ESA3430NL90-12 | Die set n. 12 - length 90 mm | 12 | 12-15 | 90 | 3.543 |
| ESA3430NL90-15 | Die set n. 15 - length 90 mm | 15 | 15-18 | 90 | 3.543 |
| ESA3430NL90-18 | Die set n. 18 - length 90 mm | 18 | 18-21 | 90 | 3.543 |
| ESA3430NL90-21 | Die set n. 21 - length 90 mm | 21 | 21-24 | 90 | 3.543 |
| ESA3320NL90-24 | Die set n. 24 - length 90 mm | 24 | 24-27 | 90 | 3.543 |
| ESA3320NL90-27 | Die set n. 27 - length 90 mm | 27 | 27-30 | 90 | 3.543 |
| ESA3430NL100D30L2 | Die set n. 30 - length 100 mm | 30 | 30-33 | 100 | 3.937 |
| ESA3320NL90-33 | Die set n. 33 - length 90 mm | 33 | 33-36 | 90 | 3.543 |
| ESA3320NL90-36 | Die set n. 36 - length 90 mm | 36 | 36-39 | 90 | 3.543 |
| ESA3320NL90-39 | Die set n. 39 - length 90 mm | 39 | 39-42 | 90 | 3.543 |
| ESA3320NL90-42 | Die set n. 42 - length 90 mm | 42 | 42-45 | 90 | 3.543 |
| ESA3320N100-45 | Die set n. 45 - length 100 mm | 45 | 45-48 | 100 | 3.937 |
| ESA3320N100-48 | Die set n. 48 - length 100 mm | 48 | 48-51 | 100 | 3.937 |
| ESA3320N110-51 | Die set n. 51 - length 110 mm | 51 | 51-57 | 110 | 4.331 |
| ESA3320N110-57 | Die set n. 57 - length 110 mm | 57 | 57-62 | 110 | 4.331 |
| ESA3320N110-62 | Die set n. 62 - length 110 mm | 62 | 62-66 | 110 | 4.331 |
| ESA3320N125-66 | Die set n. 66 - length 110 mm | 66 | 66-70 | 110 | 4.331 |
| ESA3320N100-70 | Die set n. 70 - length 100 mm | 70 | 70-72 | 100 | 3.937 |
| ESA3330NL100D072L2 | Die set n. 72 - length 100 mm | 72 | 72-73 | 100 | 3.937 |
| ESA3330NL236D073L4 | Die set n. 73 - length 125-28 mm, Reinforced Pin | 73 | 73-76 | 125 | 4.921 |
| ESA3540N125-76 | Die set n. 76 - length 125 mm | 76 | 76-86 | 125 | 4.921 |
| ESA3440NL150D086L6 | Die set n. 86 - length 150 mm | 86 | 86-90 | 150 | 5.906 |
| ESA3540N125-90F | Die set n. 90 - length 125 mm | 90 | 90-95 | 125 | 4.921 |
| ESA3440NL150D095L6 | Die set n. 95 - length 150 mm | 95 | 95-105 | 150 | 5.906 |
| ESA3550NL150D105L | Die set n. 105 - length 150 mm | 105 | 105-112 | 150 | 5.906 |
| ESA3550NL150D112L | Die set n. 112 - length 150 mm | 112 | 112-122 | 150 | 5.906 |
| ESA3440NL130D122L5 | Die set n. 122 - length 130 mm, Reinforced Pin | 122 | 122 -130 | 130 | 5.118 |
| ESA3550NL150D130L1 | Die set n. 130 - length 145 mm | 130 | 130-140 | 145 | 5.709 |
| ESA3540N480KT | Kit 13 dies MS480 (n.15 to n.73) | | | | |
| ESA3540N400KTF | Kit 20 dies MS480 (n.15 to n.76) | | | | |

CRIMPING MACHINES

MS 800

ASSEMBLING FOR LARGE BORE HOSES STAND TYPE CRIMP MACHINE, SCS CONTROL



KEY ADVANTAGES

- Designed for heavy duty large bore hydraulic hoses
- High power and speed
- Ergonomically designed for large bore hoses
- Safe Crimp System (SCS) for maximum reliability during the crimping process
- Large opening up to 8"
- Long master dies
- Very high crimping force

MAIN APPLICATIONS

Dedicated to professional assemblers operating in off-shore, mining and giant hydraulics. This machine is designed for large bore, robust hoses - not advised for small bore hoses (DN 12 and smaller).

TECHNICAL SPECIFICATIONS

| | | | |
|----------------------|--|----------------------------|--|
| Dimensions: | 1400 x 1400 x 2060 mm (55 x 55 x 81") | Motor: | 7.5 kW |
| Net Weight: | 4300 kg (9480 lb) | Noise Level: | < 70 dB A |
| Packaging: | Not available | Crimp Range: | 4 - 230 mm (0.157 - 9.055") |
| Gross Weight: | 5000 kg (11023 lb) | Crimp Force: | 800 t |
| Voltages: | 380/415 V, 3Ph, 50 Hz | Opening with Dies: | +100 mm (+3.937") |
| Capacity: | 4ws: 4" max. 6ws: 3" max. 8ws: 3" max. Industrial: 8" | Complete Opening: | 350 mm (13.779") |
| | | Master Die Length: | 180 mm (7.087") |
| | | Technical Features: | - Machine platform equipped with rollers to support the hose at working height (1100 mm) in order to handle large bore hoses more easily - Supplied as standard: Intermediate dies 250/130 - Options available: Die storage panel, die size upon request |

HOSE AND FITTING SELECTION

| Hose Type | Fittings Type | Max. Hose Size | Ref. Hoses |
|--------------------------|---|---------------------|---|
| 4 Wire Spirals | MF2000 Multifit; MF2000 Interlock Plus; MF2000 Xtralock; MF2000 Spiralfit | 4" with extra dies | Rockmaster (spiral); Shieldmaster (spiral); GoldenISO Xtraflex; Xtraflow/4WS; Goldenblast |
| 6/8 Wire Spirals | MF2000 Interlock Plus; MF2000 Xtralock; MF2000 Interlock Super | >3" with extra dies | Diamondspir up to 3"; Rockmaster/13; Rockmaster/15 |
| Industrial Textile Hoses | Various | 8" | Spirtex/K; Others |



Performances measured on a 400 V, 3Ph, 50 Hz network

CRIMPING MACHINES

MS 800

ASSEMBLING FOR LARGE BORE HOSES

STAND TYPE CRIMP MACHINE, SCS CONTROL

ORDERING INFORMATION

| Product Code | Description |
|----------------|------------------------------|
| EOA3434NMMS800 | MS 800 SCS 380/415V 3PH 50HZ |

AVAILABLE DIE SETS

| Product Code | Description | N° | Crimp Range | Die Length (mm) | Die Length (inch) |
|--------------------|--|-----|-------------|-----------------|-------------------|
| ESA3320NL90-39 | Die set n. 39 - length 90 mm | 39 | 39-42 | 90 | 3.543 |
| ESA3320NL90-42 | Die set n. 42 - length 90 mm | 42 | 42-45 | 90 | 3.543 |
| ESA3320N100-45 | Die set n. 45 - length 100 mm | 45 | 45-48 | 100 | 3.937 |
| ESA3320NL100-48 | Die set n. 48 - length 100 mm | 48 | 48-51 | 100 | 3.937 |
| ESA3430N110-51 | Die set n. 51 - length 110 mm | 51 | 51-57 | 110 | 4.331 |
| ESA3430N110-57 | Die set n. 57 - length 110 mm | 57 | 57-62 | 110 | 4.331 |
| ESA3320N110-62 | Die set n. 62 - length 110 mm | 62 | 62-66 | 110 | 4.331 |
| ESA3330N125-66 | Die set n. 66 - length 110 mm | 66 | 66-70 | 110 | 4.331 |
| ESA3320N100-70 | Die set n. 70 - length 100 mm | 70 | 70-72 | 100 | 3.937 |
| ESA3330NL100D072L2 | Die set n. 72 - length 100 mm | 72 | 72-73 | 100 | 3.937 |
| ESA3330NL125D073L4 | Die set n. 73 - length 125-28 mm, Reinforced Pin | 73 | 73-76 | 125 | 4.921 |
| ESA3540N125-76 | Die set n. 76 - length 125 mm | 76 | 76-86 | 125 | 4.921 |
| ESA3440NL150D086L6 | Die set n. 86 - length 150 mm | 86 | 86-90 | 150 | 5.906 |
| ESA3540N125-90F | Die set n. 90 - length 125 mm | 90 | 90-95 | 125 | 4.921 |
| ESA3440NL150D095L6 | Die set n. 95 - length 150 mm | 95 | 95-105 | 150 | 5.906 |
| ESA3530NL180D105L5 | Die set n. 105 - length 180 mm | 105 | 105-112 | 180 | 7.087 |
| ESA3550NL150D112L | Die set n. 112 - length 150 mm | 112 | 112-122 | 150 | 5.906 |
| ESA3530NL180D130L5 | Die set n. 130 - length 180 mm | 130 | 130-140 | 180 | 7.087 |
| ESA3540N800KTF | Kit 18 dies MS800 (n.39 to n.130) | | | | |

CUTTING MACHINES

M22 CUT STARTER WORKSHOP BENCHTOP



KEY ADVANTAGES

- Smooth bending system
- 90° cut
- Clean cut
- Scalloped blade
- Dust collector included
- Multiple voltage options

MAIN APPLICATIONS

Dedicated to repair shops or maintenance departments making low volumes of small and medium sized hose assemblies.

TECHNICAL SPECIFICATIONS

| | | | |
|----------------------|--|----------------------------------|---|
| Dimensions: | 630 x 485 x 650 mm (25 x 19 x 26") | Motor: | 2.2 kW |
| Net Weight: | 42 kg (93 lb) | Rotation Speed: | 3000 rpm |
| Packaging: | 800 x 600 x 830 mm (31 x 24 x 33") | Scalloped Blade Diameter: | 254 mm (10") included |
| Gross Weight: | 55 kg (121 lb) | Max. Hose OD: | 50 mm (1.969") |
| Voltages: | 220/240 V, 3Ph, 50 Hz 380/415 V, 3Ph, 50 Hz 208/240 V, 3Ph, 60 Hz 380/415 V, 3Ph, 60 Hz | Technical Features: | - Dust collector included as standard - Dimensions van type machine: 488 x 630 x 650 mm (19.2 x 24.8 x 25.6"); 38 kg (84 lb) |
| Capacity: | 2wb: 1 1/4" max. 4ws: 1 1/4" max. | | |

HOSE AND FITTING SELECTION

| Hose Type | Max. Hose Size | Ref. Hoses |
|------------------------|----------------|---|
| 2 Wire Braid & Textile | 1 1/4" | Tractor; Harvester; Lyteflex; Pilot; Cover; Equator; Rockmaster (braided); Shieldmaster (braided); Astro; Multitex; Hydroplast; |
| 4 Wire Spirals | 1 1/4" | Rockmaster (spiral); GoldenISO Xtraflex |



Performances measured on a 400 V, 3Ph, 50 Hz network

CUTTING MACHINES

M22 CUT

STARTER WORKSHOP

BENCHTOP

ORDERING INFORMATION

| Product Code | Description |
|----------------|----------------------------|
| EOC3114NCUT22P | M 22 CUT 380/415V 3PH 50HZ |
| EOC3117NCUT22P | M 22 CUT 220/240V 3PH 50HZ |
| EOC3119NCUT22P | M 22 CUT 208/240V 3PH 60HZ |
| EOC311BNCUT22P | M 22 CUT 380/415V 3PH 60HZ |

AVAILABLE ACCESSORIES

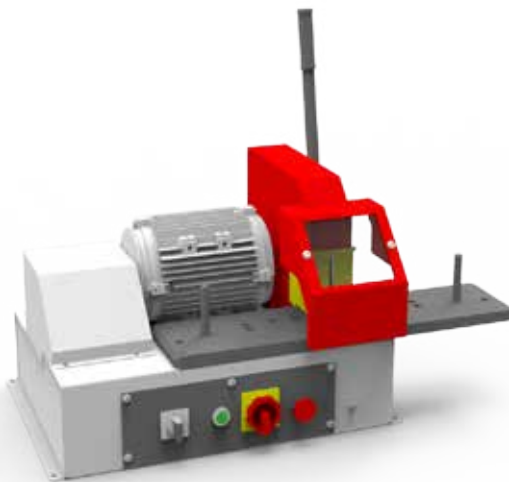
| Product Code | Description |
|--------------|-------------------------------------|
| 3012309 | Cutting Disc Scalloped Style 250 mm |

CUTTING MACHINES

M30 CUT E

STARTER & PROFESSIONAL WORKSHOP

BENCHTOP CUTTING MACHINE, OPTIONAL SKIVING



KEY ADVANTAGES

- Compact design
- Easy and safe to use
- Versatile, scalloped blade for high performance and efficient cutting with minimal smoke
- Electronic brake
- Skiving module can be ordered as optional and integrated on this machine

MAIN APPLICATIONS

Benchtop machine for after-market service, container workshop or mobile van service and field repair. Also workshops for intermittent service.

TECHNICAL SPECIFICATIONS

| | | | |
|----------------------|--|----------------------------------|----------------|
| Dimensions: | 835 x 545 x 640 mm (33 x 21 x 25") | Motor: | 3.0 kW |
| Net Weight: | 75 kg (165 lb) | Rotation Speed: | 3000 rpm |
| Packaging: | 1170 x 770 x 1100 mm (46 x 30 x 43") | Scalloped Blade Diameter: | 300 mm (11.8") |
| Gross Weight: | 90 kg (198 lb) | Max. Hose OD: | 85 mm (3.346") |
| Voltages: | 220/240 V, 3Ph, 50 Hz 380/415 V, 3Ph, 50 Hz 208/240 V, 3Ph, 60 Hz 380/415 V, 3Ph, 60 Hz | | |
| Capacity: | 2wb: 2" max. 4ws: 2" max. 6ws: 1 1/4" max. Industrial: 2" max. | | |

HOSE AND FITTING SELECTION

| Hose Type | Max. Hose Size | Ref. Hoses |
|------------------------|----------------|---|
| 2 Wire Braid & Textile | 2" | Tractor; Harvester; Lyteflex; Pilot; Cover; Equator; Rockmaster (braided); Shieldmaster (braided); Astro; Multitex; Hydroplast; Spirtex/K |
| 4 Wire Spirals | 2" | Rockmaster (spiral); Shieldmaster (spiral); GoldenISO Xtraflex; Goldenblast |
| 6 Wire Spirals | 1 1/4" | Rockmaster/13; Rockmaster/15; Diamondspir |



Performances measured on a 400 V, 3Ph, 50 Hz network

CUTTING MACHINES

M30 CUT E

STARTER & PROFESSIONAL WORKSHOP

BENCHTOP CUTTING MACHINE, OPTIONAL SKIVING

ORDERING INFORMATION

| Product Code | Description |
|-----------------|---------------------------------|
| EOC3324NM30CUTE | M30 CUT E 380/415V 3PH 50HZ ECO |
| EOC3327NM30CUTE | M30 CUT E 220/240V 3PH 50HZ ECO |
| EOC3329NM30CUTE | M30 CUT E 208/240V 3PH 60HZ ECO |
| EOC332BNM30CUTE | M30 CUT E 380/415V 3PH 60HZ ECO |

AVAILABLE ACCESSORIES

| Product Code | Description |
|--------------|-------------------------------------|
| 3015126 | Cutting Disc Scalloped Style 300 mm |

CUTTING MACHINES

M30 CUT L

**STARTER AND PROFESSIONAL WORKSHOP
STAND TYPE CUTTING MACHINE**



KEY ADVANTAGES

- Compact design
- Easy and safe to use
- Versatile, scalloped blade for high performance and efficient cutting with minimal smoke
- Ergonomic, easy to clean
- Integrated dust collector

MAIN APPLICATIONS

Benchtop machine for after-market service, container workshop or mobile van service, field repair and intermittent service workshops.

TECHNICAL SPECIFICATIONS

| | | | |
|----------------------|--|----------------------------------|---------------|
| Dimensions: | 765 x 500 x 1150 mm (30 x 20 x 45") | Motor: | 3.0 kW |
| Net Weight: | 92 kg (203 lb) | Rotation Speed: | 3000 rpm |
| Packaging: | 800 x 600 x 1200 mm (32 x 24 x 47") | Scalloped Blade Diameter: | 254 mm (10") |
| Gross Weight: | 120 kg (265 lb) | Max. Hose OD: | 85 mm (3.34") |
| Voltages: | 220/240 V, 3Ph, 50 Hz 380/415 V, 3Ph, 50 Hz 208/240 V, 3Ph, 60 Hz 380/415 V, 3Ph, 60 Hz | | |
| Capacity: | 2wb: 2" max. 4ws: 2" max. 6ws: 1 1/4" max. Industrial: 2" | | |

HOSE AND FITTING SELECTION

| Hose Type | Max. Hose Size | Ref. Hoses |
|------------------------|----------------|---|
| 2 Wire Braid & Textile | 2" | Tractor; Harvester; Lyteflex; Pilot; Cover; Equator; Rockmaster (braided); Shieldmaster (braided); Astro; Multitex; Hydroplast; Spirtex/K |
| 4 Wire Spirals | 2" | Rockmaster (spiral); Shieldmaster (spiral); GoldenISO Xtraflex; Goldenblast |
| 6 Wire Spirals | 1 1/4" | Rockmaster/13; Rockmaster/15; Diamondspir |



Performances measured on a 400 V, 3Ph, 50 Hz network

CUTTING MACHINES

M30 CUT L

STARTER AND PROFESSIONAL WORKSHOP

STAND TYPE CUTTING MACHINE

ORDERING INFORMATION

| Product Code | Description |
|-----------------|-----------------------------|
| EOC3424NM30CUTL | M30 CUT L 380/415V 3PH 50HZ |
| EOC3427NM30CUTL | M30 CUT L 220/240V 3PH 50HZ |

AVAILABLE ACCESSORIES

| Product Code | Description |
|---------------|-------------------------------------|
| 3015309 | Cutting Disc Scalloped Style 250 mm |
| ESC3440NCRL2M | Cutting Rail Length 2 M |
| ESC3440NCRL3M | Cutting Rail Length 3 M |
| ESC3440NJUCUR | Junction for Cutting Rail |

CUTTING MACHINES

M30 CUT & SKIVE

STARTER & PROFESSIONAL WORKSHOP

BENCHTOP, INTEGRATED CUTTING & SKIVING



KEY ADVANTAGES

- Compact design
- Two operations in one machine
- Easy and safe to use
- Versatile, scalloped blade for high performance and efficient cutting with minimal smoke
- Dust free skive operation (drawers for dust collection)
- Electronic brake

MAIN APPLICATIONS

Benchtop machine for after-market service, container workshops or mobile van service. Also suitable for field repair and intermittent service workshops.

TECHNICAL SPECIFICATIONS

| | | | |
|----------------------|--|----------------------------------|--|
| Dimensions: | 835 x 545 x 640 mm (33 x 21 x 25") | Motor: | 3.0 kW |
| Net Weight: | 85 kg (187 lb) | Rotation Speed (Cut): | 3000 rpm |
| Packaging: | 1170 x 770 x 1100 mm (46 x 30 x 43") | Rotation Speed (Skive): | 200 rpm |
| Gross Weight: | 100 kg (220 lb) | Scalloped Blade Diameter: | 300 mm (11.8") |
| Voltages: | 220/240 V, 3Ph, 50 Hz 380/415 V, 3Ph, 50 Hz 208/240 V, 3Ph, 60 Hz 380/415 V, 3Ph, 60 Hz | Max. Hose OD: | 85 mm (3.34") |
| Capacity: | 2wb: 2" max. 4ws: 2" max. 6ws: 1 1/4" max. Industrial: 2" max. | Technical Features: | Skiving tools: for External Skiving (ESE) and for Internal Skiving (IS) to be ordered separately |

HOSE AND FITTING SELECTION

| Hose Type | Max. Hose Size | Ref. Hoses |
|------------------------|----------------|---|
| 2 Wire Braid & Textile | 2" | Tractor; Harvester; Lyteflex; Pilot; Cover; Equator; Rockmaster (braided); Shieldmaster (braided); Astro; Multitex; Hydroplast; Spirtex/K |
| 4 Wire Spirals | 2" | Rockmaster (spiral); Shieldmaster (spiral); GoldenISO Xtraflex; Goldenblast |
| 6 Wire Spirals | 1 1/4" | Rockmaster/13; Rockmaster/15; Diamondspir |



Performances measured on a 400 V, 3Ph, 50 Hz network

CUTTING MACHINES

M30 CUT & SKIVE

STARTER & PROFESSIONAL WORKSHOP

BENCHTOP, INTEGRATED CUTTING & SKIVING

ORDERING INFORMATION

| Product Code | Description |
|-------------------|---------------------------------|
| EOC3224NM30CUTSKY | M30 CUT/SKIVE 380/415V 3PH 50HZ |
| EOC3227NM30CUTSKY | M30 CUT/SKIVE 220/240V 3PH 50HZ |
| EOC3229NM30CUTSKY | M30 CUT/SKIVE 208/240V 3PH 60HZ |
| EOC322BNM30CUTSKY | M30 CUT/SKIVE 380/415V 3PH 60HZ |

AVAILABLE ACCESSORIES

| Product Code | Description |
|---------------|---|
| ESS3430NKTESE | KIT ESE 6 TO 50 10 MANDRELS 1/4" TO 2" |
| ESS3430NKTIS | KIT IS 12/51 7 MANDRELS 1/2" TO 2" |
| ESS3430NIS10 | IS 10 (3/8") |
| ESS3430NIS13 | IS 13 (1/2") |
| ESS3430NIS16 | IS 16 (5/8") |
| ESS3430NIS19 | IS 19 (3/4") |
| ESS3430NIS25 | IS 25 (1") |
| ESS3430NIS32 | IS 32 (1"1/4) |
| ESS3430NIS38 | IS 38 (1"1/2) |
| ESS3430NIS50 | IS 50 (2") |
| 3001795 | Spare knife for ESE Ext Skiving 6/50 mm |
| 3011245 | Spare knife for internal tool diameter 13 & 16 mm |
| 3011246 | Spare knife for internal tool diameter 19 & 25 mm |
| 3011247 | Spare knife for internal tool diameter 32 & 38 mm |
| 3011248 | Spare knife for internal tool diameter 50 mm |
| 3015126 | Cutting Disc Scalloped Style 300 mm |

CUTTING MACHINES

M55 CUT

FULL SERVICE WORKSHOP, STARTER PRODUCTION UNITS
STAND TYPE CUTTING MACHINE



KEY ADVANTAGES

- Versatile, scalloped blade for high performance smoke free cutting
- Ergonomic and functional design
- Double foot pedal system
- Safety cover and feeding guides for hose (easy and fast cutting operation)
- Digital counter for maintenance assistance

MAIN APPLICATIONS

Stand type hose cutting machine for professional service workshops and after-market service. With pneumatic bending option it is suitable for small/medium OEM productions. This is a versatile machine, suitable for hoses up to 2" (intermittent service).

TECHNICAL SPECIFICATIONS

| | | | |
|----------------------|--|----------------------------------|---|
| Dimensions: | 1140 x 1000 x 1280 mm (45 x 39 x 50") | Motor: | 7.5 kW |
| Net Weight: | 240 kg (529 lb) | Rotation Speed: | 3000 rpm |
| Packaging: | 1600 x 1200 x 1600 mm (63 x 47 x 63") | Scalloped Blade Diameter: | 400 mm (15.7") |
| Gross Weight: | 280 kg (617 lb) | Max. Hose OD: | 80 mm (3.15") |
| Voltages: | 220/240 V, 3Ph, 50 Hz 380/415 V, 3Ph, 50 Hz 208/240 V, 3Ph, 60 Hz 380/415 V, 3Ph, 60 Hz | Technical Features: | - Diameter of the suction connection: 150 mm (6") - Options: Pneumatic bending system, OEM slotted blade |
| Capacity: | 2wb: 2" max. 4ws: 2" max. 6ws: 2" max. Industrial: 2" | | |

HOSE AND FITTING SELECTION

| Hose Type | Max. Hose Size | Ref. Hoses |
|------------------------|----------------|---|
| 2 Wire Braid & Textile | 2" | Tractor; Harvester; Lyteflex; Pilot; Cover; Equator; Rockmaster (braided); Shieldmaster (braided); Astro; Multitex; Hydroplast; Spirtex/K |
| 4 Wire Spirals | 2" | Rockmaster (spiral); Shieldmaster (spiral); GoldenISO Xtraflex; Goldenblast |
| 6 Wire Spirals | 2" | Rockmaster/13; Rockmaster/15; Diamondspir |



Performances measured on a 400 V, 3Ph, 50 Hz network

CUTTING MACHINES

M55 CUT

FULL SERVICE WORKSHOP, STARTER PRODUCTION UNITS

STAND TYPE CUTTING MACHINE

ORDERING INFORMATION

| Product Code | Description |
|------------------|-------------------------------------|
| EOC3434NCUT55 | M55 CUT 380/415V 3PH+N 50HZ |
| EOC3434NCUT55SK | M55 CUT 380/415V 3PH+N 50HZ SUCTION |
| EOC3437NMCUT55 | M55 CUT 220/240V 3PH 50HZ |
| EOC3437NMCUT55SK | M55 CUT 220/240V 3PH 50HZ SUCTION |
| EOC3339NMCUT55 | M55 CUT 208/240V 3PH 60HZ |
| EOC3339NMCUT55SK | M55 CUT 208/240V 3PH 60Hz SUCTION |
| EOC343BNMCUT55 | M55 CUT 380/415V 3PH+N 60HZ |
| EOC343BNMCUT55SK | M55 CUT 380/415V 3PH+N 60HZ SUCTION |

AVAILABLE ACCESSORIES

| Product Code | Description |
|---------------|---------------------------------------|
| 3016443 | Cutting Disc Scalloped Style 400 mm |
| 3021317 | OEM Cutting Disc Slotted Style 400 mm |
| ESC3440NCRL2M | Cutting Rail Length 2 M |
| ESC3440NCRL3M | Cutting Rail Length 3 M |
| ESC3440NJUCUR | Junction for Cutting Rail |

CUTTING MACHINES



M75 CUT

EXPERT SERVICE LINE

STAND TYPE CUTTING MACHINE

KEY ADVANTAGES

- Powerful
- Safety cover
- High visibility
- Suitable for cutting large bore hoses

MAIN APPLICATIONS

Dedicated to hydraulic maintenance specialists working on medium and large size machines and equipment. Also suitable for small OEM suppliers.

TECHNICAL SPECIFICATIONS

| | | | |
|--------------------|-------------------------------------|---|-------------------------|
| Dimensions: | 910 x 820 x 1280 mm (36 x 32 x 50") | Motor: | 7.5 kW |
| Net Weight: | 215 kg (474 lb) | Rotation Speed: | 3000 rpm |
| Voltages: | 220/240 V, 3Ph, 50 Hz | Scalloped Blade Diameter: | 520 mm (20.5") included |
| | 380/415 V, 3Ph, 50 Hz | Max. Hose OD: | 125 mm (5") |
| | 208/240 V, 3Ph, 60 Hz | Technical Features: | |
| | 380/415 V, 3Ph, 60 Hz | - Diameter of suction connection: | 110 mm (4.33 ") |
| Capacity: | 2wb: 3" max. | - Optional tool: Brake motor, serrated disc, OEM slotted disc | |
| | 4ws: 2" max. | | |
| | 6ws: 2" max. | | |

HOSE AND FITTING SELECTION

| Hose Type | Max. Hose Size | Ref. Hoses |
|------------------------|----------------|--|
| 2 Wire Braid & Textile | 3" | Tractor; Harvester; Lyteflex; Pilot; Cover; Equator; Rockmaster (braided); Shieldmaster (braided); Astro; Multitex; Hydroplast |
| 4 Wire Spirals | 2" | Rockmaster (spiral); Shieldmaster (spiral); GoldenISO Xtraflex |
| 6 Wire Spirals | 2" | Diamondspir up to 2"; Rockmaster/13; Rockmaster/15 |



Performances measured on a 400 V, 3Ph, 50 Hz network

CUTTING MACHINES

M75 CUT

EXPERT SERVICE LINE

STAND TYPE CUTTING MACHINE

ORDERING INFORMATION

| Product Code | Description |
|----------------|---------------------------------------|
| EOC3334NCUT75 | M75 CUT 380/415V 3PH 50HZ |
| EOC3334NM75BM | M75 CUT 380/415V 3PH 50HZ Brake motor |
| EOC3337NCUT75 | M75 CUT 220/240V 3PH 50HZ |
| EOC3339NCUT75 | M75 CUT 208/240V 3PH 60HZ |
| EOC3339NCUT75F | M75 CUT 208/240V 3PH 60HZ BRAKE |

AVAILABLE ACCESSORIES

| Product Code | Description |
|---------------|---------------------------------------|
| 3016797 | Cutting Disc Scalloped Style 520 mm |
| 3021075 | OEM Cutting Disc Slotted Style 520 mm |
| ESC3440NCRL2M | Cutting Rail Length 2 M |
| ESC3440NCRL3M | Cutting Rail Length 3 M |
| ESC3440NJUCUR | Junction for Cutting Rail |

CUTTING MACHINES



M90 CUT

EXPERT SERVICE LINE

STAND TYPE CUTTING MACHINE

KEY ADVANTAGES

- Very powerful
- Heavy duty for difficult cuts
- Hydraulic bending
- Brake motor
- Electronic soft start

MAIN APPLICATIONS

Dedicated to professional assemblers, large OEM suppliers and special applications.

TECHNICAL SPECIFICATIONS

Dimensions: 1000 x 1060 x 1350 mm (39 x 42 x 53")

Net Weight: 260 kg (573 lb)

Voltages: 220/240 V, 3Ph, 50 Hz

380/415 V, 3Ph, 50 Hz

208/240 V, 3Ph, 60 Hz

380/415 V, 3Ph, 60 Hz

Capacity: 2wb: 3½" max.

4ws: 3½" max.

6ws: 3" max.

Motor: 9.0 kW

Rotation Speed: 3000 rpm

Scalloped Blade Diameter: 520 mm (20.5") included

Max. Hose OD: 125 mm (5")

Technical Features:

- Diameter of suction connection: 110 mm (4.33")

- Standard tool: Hydraulic bending, brake motor

- Optional tool: Serrated disc, OEM slotted disc

HOSE AND FITTING SELECTION

| Hose Type | Max. Hose Size | Ref. Hoses |
|------------------------|------------------|--|
| 2 Wire Braid & Textile | 3½" | Tractor; Harvester; Lyteflex; Pilot; Cover; Equator; Rockmaster (braided); Shieldmaster (braided); Astro; Multitex; Hydroplast; Xtraflow |
| 4 Wire Spirals | 3½" | Rockmaster (spiral); Shieldmaster (spiral); GoldenISO Xtraflex; Xtraflow/4WS |
| 6 Wire Spirals | 3" (21 MPa type) | Diamondspir (up to 3") |



Performances measured on a 400 V, 3Ph, 50 Hz network

CUTTING MACHINES

M90 CUT

EXPERT SERVICE LINE

STAND TYPE CUTTING MACHINE

ORDERING INFORMATION

| Product Code | Description |
|-----------------|-------------------------------------|
| EOC3444NCUT90 | M90 CUT 380/415V 3PH 50HZ |
| EOC3444NCUT90HP | M90 CUT 380/415V 3PH 50HZ HIGH PROD |
| EOC3447NCUT90 | M90 CUT 220/240V 3PH 50HZ |
| EOC3449NCUT90 | M90 CUT 208/240V 3PH 60HZ |
| EOC344BNCUT90 | M90 CUT 380/415V 3PH 60HZ |

AVAILABLE ACCESSORIES

| Product Code | Description |
|---------------|---------------------------------------|
| 3016797 | Cutting Disc Scalloped Style 520 mm |
| 3021075 | OEM Cutting Disc Slotted Style 520 mm |
| 3002792 | Cutting Disc Serrated Style |
| ESC3440NCRL2M | Cutting Rail Length 2 M |
| ESC3440NCRL3M | Cutting Rail Length 3 M |
| ESC3440NJUCUR | Junction for Cutting Rail |

SKIVING MACHINES

MH SKY

FIELD SERVICE & MOBILE WORKSHOP

MANUAL, PORTABLE SKIVING TOOL



KEY ADVANTAGES

- Portable, lightweight
- Economic
- Simple
- Compact
- Robust
- Plug'n skive system

MAIN APPLICATIONS

Dedicated to small repair shops and maintenance departments making low volumes of hose assemblies a day. Also ideal for carrying out on-site repairs or for placement in a service van.

TECHNICAL SPECIFICATIONS

Dimensions: 413 x 52 x 224 mm (16 x 2 x 9")

Net Weight: 3 kg (7 lb)

Capacity: 2wb: 2" max.

4ws: 2" max.

Technical Features:

- Tool selection:

External Skiving Kit (ESE) including 10 mandrels (6-8-10-13-16-19-25-32-38-50)

Internal Skiving Kit (IS) including 7 mandrels (13-16-19-25-32-38-50)

Internal skiving tools can also be ordered per diameter

HOSE AND FITTING SELECTION

| Hose Type | Max. Hose Size | Ref. Hoses |
|------------------------|----------------|--|
| 2 Wire Braid & Textile | 2" | Tractor; Harvester; Lyteflex; Pilot; Cover; Equator; Rockmaster (braided); Shieldmaster (braided); Astro; Multitex; Hydroplast |
| 4 Wire Spirals | 2" | Rockmaster (spiral); Shieldmaster (spiral); GoldenISO Xtraflex |

SKIVING MACHINES

MH SKY

FIELD SERVICE & MOBILE WORKSHOP

MANUAL, PORTABLE SKIVING TOOL

ORDERING INFORMATION

| Product Code | Description |
|--------------|--------------------------|
| EOS3410NHSK | MH SKY HAND SKIVING TOOL |

AVAILABLE ACCESSORIES

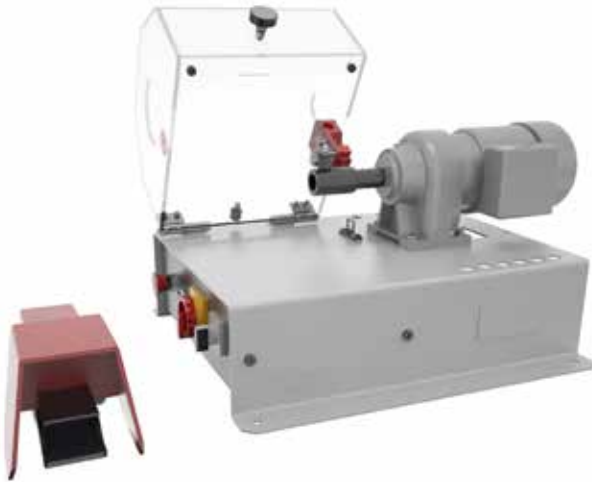
| Product Code | Description |
|---------------|---|
| ESS3430NKTESE | KIT ESE 6 TO 50 10 MANDRELS 1/4" TO 2" |
| ESS3430NKTIS | KIT IS 12/51 7 MANDRELS 1/2" TO 2" |
| ESS3430NIS10 | IS 10 (3/8") |
| ESS3430NIS13 | IS 13 (1/2") |
| ESS3430NIS16 | IS 16 (5/8") |
| ESS3430NIS19 | IS 19 (3/4") |
| ESS3430NIS25 | IS 25 (1") |
| ESS3430NIS32 | IS 32 (1"1/4) |
| ESS3430NIS38 | IS 38 (1"1/2) |
| ESS3430NIS50 | IS 50 (2") |
| 3001795 | Spare knife for ESE Ext Skiving 6/50 mm |
| 3011245 | Spare knife for internal tool diameter 13 & 16 mm |
| 3011246 | Spare knife for internal tool diameter 19 & 25 mm |
| 3011247 | Spare knife for internal tool diameter 32 & 38 mm |
| 3011248 | Spare knife for internal tool diameter 50 mm |

SKIVING MACHINES

M50 SKY

SMALL SERVICE WORKSHOP

BENCHTOP SKIVING



KEY ADVANTAGES

- Plug'n skive system
- Compact & stable
- Safety switch on the cover
- Good visibility
- Tool storage included
- Foot pedal drive with emergency stop
- 2-way rotation

MAIN APPLICATIONS

Dedicated to hydraulic maintenance specialists working on medium sized machines and equipment. Also suitable for assemblers involved in medium sized hose assemblies and quantities.

TECHNICAL SPECIFICATIONS

| | | | |
|----------------------|------------------------------------|----------------------------|--|
| Dimensions: | 500 x 660 x 360 mm (19 x 26 x 14") | Capacity: | 2wb: 2" max. |
| Net Weight: | 45 kg (99 lb) | | 4ws: 2" max. |
| Packaging: | 800 x 600 x 830 (31 x 24 x 33") | Motor: | 0.25 kW |
| Gross Weight: | 55 kg (121 lb) | Rotation Speed: | 100 rpm |
| Voltages: | 220/240 V, 1Ph, 50 Hz | Technical Features: | |
| | 380/415 V, 3Ph, 50 Hz | | Tools available (to be ordered separately) ESE, IS, ESP1, ESP2 |
| | 220/240 V, 1Ph, 60 Hz | | |
| | 380/415 V, 3Ph, 60 Hz | | |

HOSE AND FITTING SELECTION

| Hose Type | Max. Hose Size | Ref. Hoses |
|------------------------|----------------|--|
| 2 Wire Braid & Textile | 2" | Tractor; Harvester; Lyteflex; Pilot; Cover; Equator; Rockmaster (braided); Shieldmaster (braided); Astro; Multitex; Hydroplast |
| 4 Wire Spirals | 2" | Rockmaster (spiral); Shieldmaster (spiral); GoldenISO Xtraflex |

SKIING MACHINES

M50 SKY

SMALL SERVICE WORKSHOP

BENCHTOP SKIVING

ORDERING INFORMATION

| Product Code | Description |
|---------------|---------------------------|
| EOS3434N50PSK | M50 SKY 380/415V 3PH 50HZ |
| EOS3437N50PSK | M50 SKY 220/240V 3PH 50HZ |
| EOS3439N50PSK | M50 SKY 208/240V 3PH 60HZ |
| EOS343BN50PSK | M50 SKY 380/415V 3PH 60HZ |

AVAILABLE ACCESSORIES

| Product Code | Description |
|-----------------|---|
| ESS3430NKTESE | KIT ESE 6 TO 50 10 MANDRELS 1/4" TO 2" |
| ESS3430NKTIS | KIT IS 12/51 7 MANDRELS 1/2" TO 2" |
| ESS3430NIS10 | IS 10 (3/8") |
| ESS3430NIS13 | IS 13 (1/2") |
| ESS3430NIS16 | IS 16 (5/8") |
| ESS3430NIS19 | IS 19 (3/4") |
| ESS3430NIS25 | IS 25 (1") |
| ESS3430NIS32 | IS 32 (1"1/4) |
| ESS3430NIS38 | IS 38 (1"1/2) |
| ESS3430NIS50 | IS 50 (2") |
| ESS3430NKTESP | KIT ESP 06/51 10 MANDRELS 1/4" TO 2" |
| ESS3430NESP5 | ESP 05 (3/16") |
| ESS3430NESP6 | ESP 06 (1/4") |
| ESS3430NESP8 | ESP 08 (5/16") |
| ESS3430NESP10 | ESP 10 (3/8") |
| ESS3430NESP12 | ESP 12 (1/2") |
| ESS3430NESP16 | ESP 16 (5/8") |
| ESS3430NESP19 | ESP 19 (3/4") |
| ESS3430NESP25 | ESP 25 (1") |
| ESS3430NESP31 | ESP 31 (1"1/4) |
| ESS3430NESP38 | ESP 38 (1"1/2) |
| ESS3430NESP51 | ESP 51 (2") |
| ESS3220NMESP19F | ESP 19 FORESTMASTER HOSE |
| ESS3220NMESP25F | ESP 25 FORESTMASTER HOSE |
| ESS3430N2KNESP | KIT 2ND KNIFE FOR ESP |
| 3001795 | Spare knife for ESE Ext Skiving 6/50 mm |
| 3011245 | Spare knife for internal tool diameter 13 & 16 mm |
| 3011246 | Spare knife for internal tool diameter 19 & 25 mm |
| 3011247 | Spare knife for internal tool diameter 32 & 38 mm |
| 3011248 | Spare knife for internal tool diameter 50 mm |

SKIVING MACHINES



M205 SKY

EXPERT SERVICE LINE

STAND TYPE SKIVING MACHINE

KEY ADVANTAGES

- Plug'n skive system
- Large dust collector
- Robust & easily adjustable knife for quick and easy changeover
- Suitable for high volume production
- 2-way rotation

MAIN APPLICATIONS

Dedicated to professional assemblers, large OEM suppliers and special applications.

TECHNICAL SPECIFICATIONS

Dimensions: 675 x 550 x 1130 mm (27 x 22 x 44")

Net Weight: 100 kg (220 lb)

Packaging: 800 x 600 x 1200 mm (32 x 24 x 47")

Gross Weight: 160 kg (353 lb)

Voltages: 220/240 V, 3Ph, 50 Hz

380/415 V, 3Ph, 50 Hz

208/240 V, 3Ph, 60 Hz

380/415 V, 3Ph, 60 Hz

Capacity: 2wb: 2" max.

4ws: 2" max.

6ws: 3" max. with original tools

Motor: 0.9 kW

Speed Rotation: 205 rpm

Technical Features:

- Options available: speed regulator, hose clamping system (limited to distribution workshop using sizes under 2")

- Tools available (to be ordered separately): ESA, IS, ESP1, ESP2

HOSE AND FITTING SELECTION

| Hose Type | Max. Hose Size | Ref. Hoses |
|------------------------|-------------------------------|--|
| 2 Wire Braid & Textile | 3" with optional skiving tool | Tractor; Harvester; Lyteflex; Pilot; Cover; Equator; Rockmaster (braided); Shieldmaster (braided); Astro; Multitex; Hydroplast |
| 4 Wire Spirals | 3" with optional skiving tool | Rockmaster (spiral); Shieldmaster (spiral); GoldenISO Xtraflex |
| 6 Wire Spirals | 3" with optional skiving tool | Diamondspir; Rockmaster/15 |

SKIING MACHINES

M205 SKY

EXPERT SERVICE LINE

STAND TYPE SKIING MACHINE

ORDERING INFORMATION

| Product Code | Description |
|-------------------|---|
| EOS3434N205PSK | M205 SKY 380/415V 3PH 50HZ W/O ADJ.SPEED |
| EOS3434N205PSKRSA | M205 SKY 380/415V 50/60HZ W / ADJ. SPEED |
| EOS3327NM205PRSA | M205 SKY 208/240V 3PH 50/60Hz /adj.speed |
| EOS3437N205PSK | M205 SKY 220/240V 3PH 50HZ W/O AJD. SPEED |
| EOS343BN205PSK | M205 SKY 380/415V 3PH 60HZ W/O ADJ. SPEED |

AVAILABLE ACCESSORIES

| Product Code | Description |
|-----------------|---|
| ESS3430NKTESA | KIT ESA Ext Skiing - 11 mandrels 5/50 (5/6/8/10/13/16/19/25/32/38/50) M205 SKY PLUS |
| ESS3430NKTIS | KIT IS 12/51 7 MANDRELS 1/2' TO 2" |
| ESS3430NIS10 | IS 10 (3/8") |
| ESS3430NIS13 | IS 13 (1/2") |
| ESS3430NIS16 | IS 16 (5/8") |
| ESS3430NIS19 | IS 19 (3/4") |
| ESS3430NIS25 | IS 25 (1") |
| ESS3430NIS32 | IS 32 (1"1/4) |
| ESS3430NIS38 | IS 38 (1"1/2) |
| ESS3430NIS50 | IS 50 (2") |
| ESS3430NIS63 | IS 63 (2"1/2) for M205 SKY+ |
| ESS3430NIS76 | IS 76 (3") for M205 SKY+ |
| ESS3430NKTESP | KIT ESP 06/51 10 MANDRELS 1/4" TO 2" |
| ESS3430NESP5 | ESP 05 (3/16") |
| ESS3430NESP6 | ESP 06 (1/4") |
| ESS3430NESP8 | ESP 08 (5/16") |
| ESS3430NESP10 | ESP 10 (3/8") |
| ESS3430NESP12 | ESP 12 (1/2") |
| ESS3430NESP16 | ESP 16 (5/8") |
| ESS3430NESP19 | ESP 19 (3/4") |
| ESS3430NESP25 | ESP 25 (1") |
| ESS3430NESP31 | ESP 31 (1"1/4) |
| ESS3430NESP38 | ESP 38 (1"1/2) |
| ESS3430NESP51 | ESP 51 (2") |
| ESS3430NESP63 | ESP 63 (2"1/2) |
| ESS3430NESP76 | ESP 76 (3") |
| ESS3430N2KNESP | KIT 2ND KNIFE FOR ESP |
| ESS3220NMESP19F | ESP 19 FORESTMASTER HOSE |
| ESS3220NMESP25F | ESP 25 FORESTMASTER HOSE |
| 3011245 | Spare knife for internal tool diameter 13 & 16 mm |
| 3011246 | Spare knife for internal tool diameter 19 & 25 mm |
| 3011247 | Spare knife for internal tool diameter 32 & 38 mm |
| 3011248 | Spare knife for internal tool diameter 50 |
| 3011221 | Spare knife for external skiing for M205 SKY |

MARKING MACHINES



M50 MARK

AFTER MARKET SERVICE

BENCHTOP, FERRULE MARKING

KEY ADVANTAGES

- Robust
- Easy to use
- Compact
- Large space for 14 stamps

MAIN APPLICATIONS

Dedicated to repair shops and distributors for marking low volumes of ferrules.

TECHNICAL SPECIFICATIONS

Dimensions: 390 x 360 x 520 mm (15 x 14 x 20")

Net Weight: 34 kg (75 lb)

Packaging: 800 x 600 x 830 mm (31 x 24 x 33")

Gross Weight: 50 kg (110 lb)

Capacity: 2wb: 4" max.

4ws: 4" max.

Standard stamp holder: 2 x 14 stamps

Size of the stamps: 6 x 3 mm (0.236 x 0.118")

Height of the letters: 2.5 mm (0.098")

Technical Features:

Optional stamp holder with numbering wheel: 3 figures on the wheel and one groove for 10 stamps

Stamp Box Containing:

Letters (quantity in brackets): A(3), B(2), C(2), D(2), E(4), F(2), G(2), H(2), I(3), J(2), K(2), L(3), M(2), N(2), O(1), P(2), Q(1), R(3), S(3), T(2), U(3), V(2), W(1), X(1), Y(1), Z(1)

Numbers (quantity in brackets): 0(3), 1(3), 2(4), 3(4), 4(4), 5(3), 6(3), 7(3), 8(3), 9(3)

Signs (quantity in brackets): / (2), , (2), - (2), . (2)

MARKING MACHINES

M50 MARK

AFTER MARKET SERVICE

BENCHTOP, FERRULES MARKING

ORDERING INFORMATION

| Product Code | Description |
|--------------|---------------------------------|
| EOM3120N | M50 MARK MANUAL MARKING MACHINE |

AVAILABLE ACCESSORIES

| Product Code | Description |
|--------------------|---|
| ESM3220NTCOF120PB | Box with 120 characters (letters and numbers) |
| ESM3220NTPOINCBRUT | Characters 6 x 3 mm (to be indicated) |
| 3011158 | Numbering wheel with 3 figures M50 MARK |
| 3003814 | Blank character M 50 MARK |

INSERT PUSHING MACHINES

M1500 INS

EXPERT SERVICE LINE

BENCHTOP COUPLING INSERTER



KEY ADVANTAGES

- Compact
- Sturdy
- Powerful

MAIN APPLICATIONS

Dedicated to assemblers involved in relevant productions and professional workshops.

TECHNICAL SPECIFICATIONS

Dimensions: 750 x 660 x 300 mm (30 x 26 x 12")

Net Weight: 70 kg (154 lb)

Capacity: 2wb: 2" max.

4ws: 2" max.

6ws: 2" max.

Power Supply: compressed air (7 bar)

Technical Features:

Optional tool: for small bore 1/4", 3/8", 1/2" shell

HOSE AND FITTING SELECTION

| Hose Type | Fittings Type | Max. Hose Size | Ref. Hoses |
|------------------------|--|----------------|--|
| 2 Wire Braid & Textile | MF2000 Multifit; MF3000 OPF; MF3000 OPK | 2" | Tractor; Harvester; Lyteflex; Pilot; Cover; Equator; Rockmaster (braided); Shieldmaster (braided); Astro; Multitex; Hydroplast |
| 4 Wire Spirals | MF2000 Multifit; MF2000 Interlock Plus; MF3000 OPK; MF2000 Spiralfit | 2" | Rockmaster (spiral); Shieldmaster (spiral); GoldenISO Xtraflex |
| 6 Wire Spirals | MF2000 Xtralock; MF2000 Interlock Plus | 2" | Diamondspir (up to 2") |

INSERT PUSHING MACHINES

M1500 INS

EXPERT SERVICE LINE

BENCHTOP COUPLING INSERTER

ORDERING INFORMATION

| Product Code | Description |
|---------------|--|
| EOI3430S1500I | M1500 INS (COUPLING INSERTER ½" to 2") |

TEST BENCHES

MTB 1500

**TEST BENCH, PROOF PRESSURE & CERTIFY
STAND TYPE MACHINE**



KEY ADVANTAGES

- Large testing area for up to 5 hoses
- 2 manometers: 0 - 400 bar for precision reading and 0 - 1500 bar for high pressure
- Double safety interlock on the lid to turn the pressure off when opening
- Test assemblies up to 1500 bar (see MTB 2500)

MAIN APPLICATIONS

Dedicated to assemblers involved in limited quantities of high pressure hoses. Recommended for professional workshops.

TECHNICAL SPECIFICATIONS

| | | | |
|----------------------|---------------------------------------|--------------------------------------|-----------|
| Dimensions: | 2500 x 800 x 1050 mm (98 x 31 x 41") | Max. Pressure | 21755 psi |
| Net Weight: | 175 kg (386 lb) | Technical Features: | |
| Packaging: | 2360 x 1130 x 1330 mm (93 x 44 x 52") | Compressed air input 7 bar (100 psi) | |
| Gross Weight: | 330 kg (728 lb) | | |
| Capacity: | Wide hose range | | |

HOSE AND FITTING SELECTION

| Hose Type | Max. Hose Size | Ref. Hoses |
|------------------------|----------------|--|
| 2 Wire Braid & Textile | 2" | Tractor; Harvester; Lyteflex; Pilot; Cover; Equator; Rockmaster (braided); Shieldmaster (braided); Astro; Multitex; Hydroplast |
| 4 Wire Spirals | 2" | Rockmaster (spiral); Shieldmaster (spiral); GoldenISO Xtraflex |
| 6 Wire Spirals | 2" | Diamondspir (up to 2"); Goldenblast/Six; Rockmaster/13; Rockmaster/15 |

TEST BENCHES

MTB 1500

TEST BENCH, PROOF PRESSURE & CERTIFY

STAND TYPE MACHINE

ORDERING INFORMATION

| Product Code | Description |
|--------------------|--|
| EOT3420SMTB1500 | MTB 1500 BAR (STATIC TEST RIG- ¼" to 2") |
| EOT3420SMTB1500TSD | MTB 1500 WITH TSD & PRINTER |

AVAILABLE ACCESSORIES

| Product Code | Description |
|------------------|--|
| EST3433NMTBLIGHT | Optional internal light - MTB1500/2500 |
| EST3433NMTBEMU | Optional emulsion test (40 liter tank) |

TEST BENCHES

MTB 2500

**TEST BENCH, PROOF PRESSURE & CERTIFY
STAND TYPE MACHINE**



KEY ADVANTAGES

- Large testing area for up to 5 hoses
- 2 manometers: 0 - 400 bar for precision reading and 0 - 2500 bar for high pressure
- Double safety interlock on the lid to turn the pressure off when opening
- Test assemblies up to 2500 bar

MAIN APPLICATIONS

Dedicated to assemblers involved in limited quantities of high pressure hoses. Recommended for professional workshops.

TECHNICAL SPECIFICATIONS

Dimensions: 2500 x 800 x 1050 mm (98 x 31 x 41")
Net Weight: 175 kg (386 lb)
Packaging: 2360 x 1130 x 1330 mm (93 x 44 x 52")
Gross Weight: 330 kg (728 lb)
Capacity: Wide hose range
Max. Pressure: 36259 psi

Technical Features:

- Compressed air input 7 bar (100 psi)
- Minimum compressed air input: 7 bar with minimum air flow 1000 l/min (dry air)
- Standard fluid used for tests: filtered water; minimum inlet pressure 3 bar
- Options available: computer and printer for test report, internal light, second pump for low pressure, test with emulsion in filtered closed circuit

HOSE AND FITTING SELECTION

| Hose Type | Max. Hose Size | Ref. Hoses |
|------------------------|----------------|--|
| 2 Wire Braid & Textile | 2" | Tractor; Harvester; Lyteflex; Pilot; Cover; Equator; Rockmaster (braided); Shieldmaster (braided); Astro; Multitex; Hydroplast |
| 4 Wire Spirals | 2" | Rockmaster (spiral); Shieldmaster (spiral); GoldenISO Xtraflex |
| 6 Wire Spirals | 2" | Diamondspir (up to 2"); Goldenblast/Six; Rockmaster/13; Rockmaster/15 |

TEST BENCHES

MTB 2500

TEST BENCH, PROOF PRESSURE & CERTIFY

STAND TYPE MACHINE

ORDERING INFORMATION

| Product Code | Description |
|--------------------|---|
| EOT3420SMTB2500TSD | MTB 2500 WITH TSD & PRINTER |
| EOT3430SMTB2500 | MTB 2500 BAR (STATIC TEST RIG 1/4" to 2") |

AVAILABLE ACCESSORIES

| Product Code | Description |
|------------------|--|
| EST3433NMTBLIGHT | Optional internal light - MTB1500/2500 |
| EST3433NMTBEMU | Optional emulsion test (40 litre tank) |

ACCESSORIES AND TOOLS

CUTTING DISCS

Preferred blade type as standard:

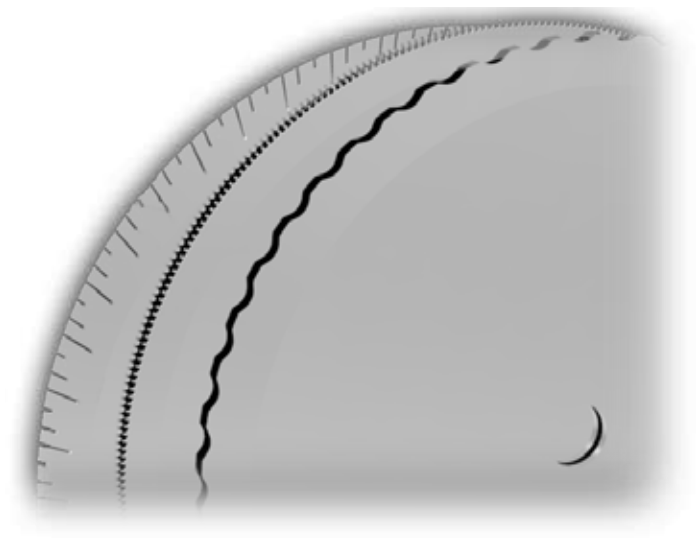
The scalloped blade is suitable for all hose types. It is the optimum solution for the whole hose range and is able to reach a high quality of cutting surface.

Alternative blade type:

The serrated disc is recommended for cutting small bore wire braided hoses (up to DN 31), and is also suitable for cutting spiral hoses.

High performance blade type:

The slotted blade is recommended for cutting standard and heavy duty hoses. It is ideal for continuous service, as the blade profile has been optimised to maintain a low temperature on the cutting edge. It is dedicated to OEM assembling.



BRAKE MOTOR

The brake motor is a safety device - when the stop button is pushed, the disc stops immediately.

PNEUMATIC BENDING

AVAILABLE ON M75 CUT AND M55 CUT

Pneumatic bending facilitates cutting, as the operator does not have to force the hose on the blade. The pneumatic system, activated by a foot switch, offers hands free operation. This is the same principle for the hydraulic bending on M90 CUT.

HOSE CLAMPING SYSTEM

Recommended for skiving hoses over 2" (DN 50)

ACCESSORIES AND TOOLS

SKIVING MACHINES

All Manuli skiving machines are equipped with the Plug'n Skive System which allows the quick and easy insertion of tools.

With the Plug n'Skive System no tools are needed to insert the skiving mandrel, simply push the mandrel into the locking system to unlock it, lift a knob and pull out the tool.

EXTERNAL SKIVING TOOLS

Depending on the machine and on customer needs, Manuli offers 3 types of external skiving tools:

ESE (EXTERNAL SKIVING ECONOMIC)

FOR MH SKY, M50 SKY AND M30 CUT & SKIVE

The ESE kit includes 10 mandrels: $\frac{1}{4}$ " , $\frac{5}{16}$ " , $\frac{3}{8}$ " , $\frac{1}{2}$ " , $\frac{5}{8}$ " , $\frac{3}{4}$ " , 1" , 1 $\frac{1}{4}$ " , 1 $\frac{1}{2}$ " , 2"

ESA (EXTERNAL SKIVING ADJUSTABLE)

FOR M205 SKY

The ESA kit includes 11 mandrels: $\frac{3}{16}$ " , $\frac{1}{4}$ " , $\frac{5}{16}$ " , $\frac{3}{8}$ " , $\frac{1}{2}$ " , $\frac{5}{8}$ " , $\frac{3}{4}$ " , 1" , 1 $\frac{1}{4}$ " , 1 $\frac{1}{2}$ " , 2"

ESA mandrels are also available in 2 $\frac{1}{2}$ " and 3"

ESP (EXTERNAL SKIVING PRODUCTION)

FOR M50 SKY AND M205 SKY

ESP tools are individual 'skiving heads' intended to be pre-set to the right depth and length for greater productivity. They are recommended for batch skiving operations and a second knife can be added for abrasion resistant covers.

ESP is available in: $\frac{3}{16}$ " , $\frac{1}{4}$ " , $\frac{5}{16}$ " , $\frac{3}{8}$ " , $\frac{1}{2}$ " , $\frac{5}{8}$ " , $\frac{3}{4}$ " , 1" , 1 $\frac{1}{4}$ " , 1 $\frac{1}{2}$ " , 2" , 2 $\frac{1}{2}$ " , 3"



ESE skiving tools

ACCESSORIES AND TOOLS

INTERNAL SKIVING TOOLS

IS (INTERNAL SKIVING)

FOR ALL MACHINES

The IS kit includes 7 mandrels: $\frac{1}{2}$ " , $\frac{5}{8}$ " , $\frac{3}{4}$ " , 1" , $1\frac{1}{4}$ " , $1\frac{1}{2}$ " , 2"

They are also available in $\frac{3}{8}$ " , $2\frac{1}{2}$ " and 3"

The ring is heat treated to resist the abrasion of the hose wires.



ACCESSORIES AND TOOLS

SAFE CRIMP SYSTEM (SCS)

DIGITAL CONTROL

SCS is the revolutionary expert system created to manage the crimping operations for Manuli hose assemblies. It includes the integration of the Manuli Hydraulics fluid connectors assembling parameters, allowing easy machine set-up and automated quality control of the assembling process for improved production consistency and safety.

Large OEM hose assembly productions in particular require increasingly high quality standards from suppliers. They need proven and certified systems and processes with measurable and repeatable parameters.

SCS is the answer.

SCS provides:

- Automated counting, mistake proofing, pressure control and quality control
- Automated crimp diameter set-up, according to hose selection and the required combination of fittings (insert and ferrule), with the Manuli crimp chart database embedded
- Pre-set calibration of the crimp diameter to compensate for instances of elastic rebound after the crimping operation
- Automatic measurement of the crimping diameter and crimping force, allowing for 100% quality checking and statistical data gathering
- Automated opening control to vary the opening process according to the requirements of the fitting geometry
- Possibility of progressive crimping (in steps rather than continuous) for use with tubing and thermoplastic hoses - Not suitable for rubber hose assemblies
- Possibility to program crimping sequences for elbows and straight fittings
- Assembly line identification (login / logout functions) to enhance traceability
- Maintenance alert for machine service
- Updates according to the latest Manuli crimping data for ongoing compliance with current requirements

Additionally, SCS creates and maintains a database of your assembling activities (including logs of recurrent and customised assemblies), recording the related control and custom parameters as well as personalised solutions.

SCS also provides an immediate alert for possible mistakes in production (eg: an incorrectly inserted fitting or an incomplete crimping operation). Mistakes are immediately detected and rejected by the system, minimising the possibility of the incorrect component being supplied to a customer.

SCS is available on all Manuli Hydraulics stand type crimp machines and on relevant new benchtop models.



ACCESSORIES AND TOOLS

ELECTRONIC PANEL

A modern flat panel with electronic buttons, which includes maintenance functions essential for keeping the machine in good condition.

Maintenance functions include:

- **2 Counters:** 1 daily counter and 1 machine life counter
- **3 LED Indicator Lights:** 1 for daily maintenance, 1 for advanced maintenance and 1 for expert maintenance
- **Semi-automatic function:** The semi-automatic opening is ideal for serial assemblies as it can be adjusted specifically to allow the fitting to pass through the dies with minimal clearance, reducing the cycle time.



NUMERICAL VERNIER

AVAILABLE ON ALL MACHINES EXCEPT MHP 80

The ergonomic numerical vernier is the standard control system offered on Manuli machines.

This system is designed for machines used in repair workshops where assemblies are mostly composed of small batches. The crimping diameter is easily adjusted by a numerical vernier (2 colours highlighting mm and 0.1mm).

100 units on the dial change the crimping diameter by 1 mm. The adjustment of the crimping diameter can be controlled up to 1/100 mm. The counter is oriented toward the operator to provide high visibility. The unit also includes an end crimping light and a guard which is firmly fixed to the machine, protecting the vernier from damage.



From MB 137 to MB 350

ACCESSORIES AND TOOLS

ELECTRICAL FOOT SWITCH (EFS)

AVAILABLE ON MACHINES FROM MB 137 PLUS TO GOLDENCRIMP 450 AND ALL STAND-TYPE MODELS

The electrical foot switch allows the operator to use both hands during the crimping process, increasing ease of use and improving safety.



MECHANICAL BACKSTOP (MBS)

AVAILABLE ON MACHINES FROM MB 240 TO MB 350 AND STAND-TYPE MODELS

The mechanical backstop allows quick positioning of the fittings in the crimp head. There is also an electronic version.

ERGONOMIC TABLE (ET)

AVAILABLE ON BENCHTOP CRIMPERS

Specifically designed for the MB 240 and MB 350 crimpers, the ergonomic table provides a perfect working height, complete access around the machine and a minimal footprint. The front hook and the shelf also provide storage facilities.



ACCESSORIES AND TOOLS

ERGONOMIC QUICK CHANGE GUN

AVAILABLE ON ALL MACHINES EXCEPT MHP 80

This innovative quick change system is available on all electric crimping machines. The ergonomic quick change gun is ideal for maximising comfort and increasing productivity when changing die sets.

Fast, clean and ergonomic

An ergonomic quick change gun provides the ability to change all of the dies simultaneously. The die sets are organised and stored in die pods on the machine panel.

Easy and safe

The system is designed to be simple to use. Dies are changed in a static position to minimise the possibility of the die pins breaking.

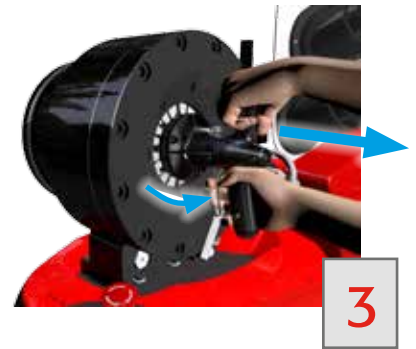
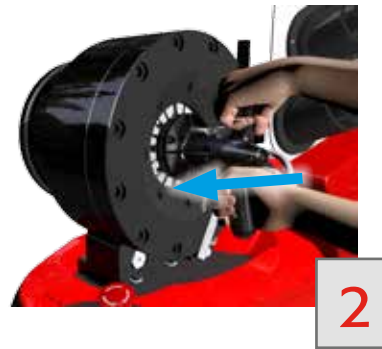


ACCESSORIES AND TOOLS

HOW TO CHANGE THE DIE

To insert the dies:

1. Choose the correct die set and take it out of the die rack.
2. Ensure the master dies are closed, then insert the die set into the head.
3. Release the die set into the head by pulling the trigger of the quick change gun.



To remove the dies:

4. Once the dies are closed, insert the quick change gun into the head until the die set is fixed to the magnets.
5. Pull the quick change gun out without pulling the trigger. The die set comes out of the head and is held by the magnets on the gun.
6. Place the die set back into the die rack.

